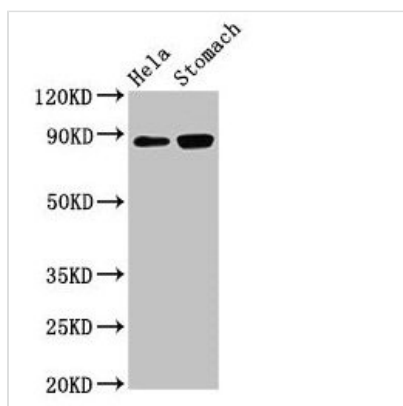




# ASAH2 Antibody

<b>Product Code</b>	CSB-PA002170EA01HU
<b>Storage</b>	Upon receipt, store at -20°C or -80°C. Avoid repeated freeze.
<b>Uniprot No.</b>	Q9NR71
<b>Immunogen</b>	Recombinant Human Neutral ceramidase protein (255-506AA)
<b>Raised In</b>	Rabbit
<b>Species Reactivity</b>	Human, Rat
<b>Tested Applications</b>	ELISA, WB, IHC, IF; Recommended dilution: WB:1:500-1:5000, IHC:1:20-1:200, IF:1:50-1:500
<b>Form</b>	Liquid
<b>Conjugate</b>	Non-conjugated
<b>Storage Buffer</b>	Preservative: 0.03% Proclin 300 Constituents: 50% Glycerol, 0.01M PBS, PH 7.4
<b>Purification Method</b>	>95%, Protein G purified
<b>Isotype</b>	IgG
<b>Clonality</b>	Polyclonal
<b>Alias</b>	Neutral ceramidase (N-CDase) (NCDase) (EC 3.5.1.23) (Acylsphingosine deacylase 2) (BCDase) (LCDase) (hCD) (N-acylsphingosine amidohydrolase 2) (Non-lysosomal ceramidase) [Cleaved into: Neutral ceramidase soluble form], ASAH2, HNAC1
<b>Immunogen Species</b>	Homo sapiens (Human)
<b>Research Area</b>	Others
<b>Target Names</b>	ASAH2

## Image



### Western Blot

Positive WB detected in: HeLa whole cell lysate, Rat stomach tissue

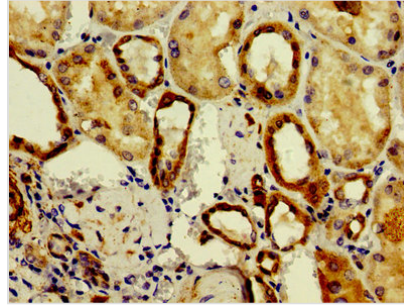
All lanes: ASAH2 antibody at 3µg/ml

Secondary

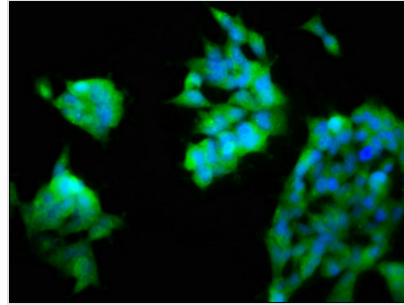
Goat polyclonal to rabbit IgG at 1/50000 dilution

Predicted band size: 86, 82 kDa

Observed band size: 86 kDa



Immunohistochemistry of paraffin-embedded human kidney tissue using CSB-PA002170EA01HU at dilution of 1:100



Immunofluorescence staining of 293 cells with CSB-PA002170EA01HU at 1:200, counter-stained with DAPI. The cells were fixed in 4% formaldehyde, permeabilized using 0.2% Triton X-100 and blocked in 10% normal Goat Serum. The cells were then incubated with the antibody overnight at 4°C. The secondary antibody was Alexa Fluor 488-conjugated AffiniPure Goat Anti-Rabbit IgG(H+L).

## Usage

For Research Use Only. Not for use in diagnostic or therapeutic procedures.