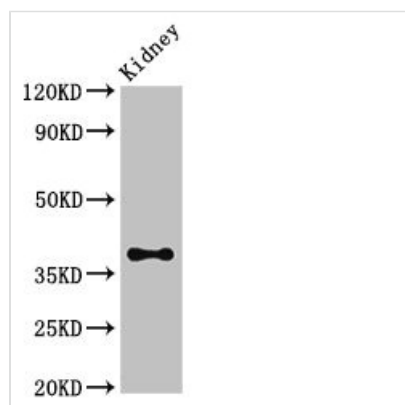




Atoh1 Antibody

Product Code	CSB-PA002306LA01MO
Storage	Upon receipt, store at -20°C or -80°C. Avoid repeated freeze.
Uniprot No.	P48985
Immunogen	Recombinant Mouse Protein atonal homolog 1 protein (1-351AA)
Raised In	Rabbit
Species Reactivity	Mouse
Tested Applications	ELISA, WB; Recommended dilution: WB:1:500-1:5000
Form	Liquid
Conjugate	Non-conjugated
Storage Buffer	Preservative: 0.03% Proclin 300 Constituents: 50% Glycerol, 0.01M PBS, PH 7.4
Purification Method	>95%, Protein G purified
Isotype	IgG
Clonality	Polyclonal
Alias	Protein atonal homolog 1 (Helix-loop-helix protein mATH-1) (mATH1), Atoh1, Ath1
Immunogen Species	Mus musculus (Mouse)
Research Area	Epigenetics and Nuclear Signaling
Target Names	Atoh1

Image



Western Blot

Positive WB detected in: Mouse kidney tissue

All lanes: Atoh1 antibody at 3.4µg/ml

Secondary

Goat polyclonal to rabbit IgG at 1/50000 dilution

Predicted band size: 38 kDa

Observed band size: 38 kDa