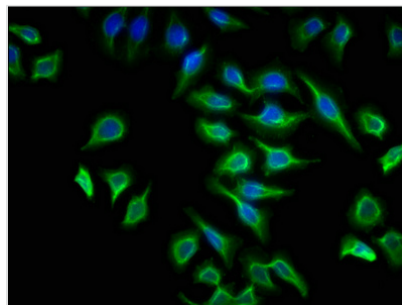




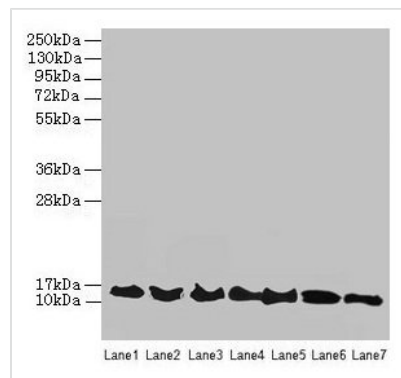
ATP6V1G2 Antibody

Product Code	CSB-PA002409LA01HU
Storage	Upon receipt, store at -20°C or -80°C. Avoid repeated freeze.
Uniprot No.	O95670
Immunogen	Recombinant Human V-type proton ATPase subunit G 2 protein (1-118AA)
Raised In	Rabbit
Species Reactivity	Human, Mouse, Rat
Tested Applications	ELISA, WB, IHC, IF; Recommended dilution: WB:1:1000-1:5000, IHC:1:20-1:200, IF:1:50-1:200
Form	Liquid
Conjugate	Non-conjugated
Storage Buffer	Preservative: 0.03% Proclin 300 Constituents: 50% Glycerol, 0.01M PBS, PH 7.4
Purification Method	>95%, Protein G purified
Isotype	IgG
Clonality	Polyclonal
Alias	V-type proton ATPase subunit G 2 (V-ATPase subunit G 2) (V-ATPase 13 kDa subunit 2) (Vacuolar proton pump subunit G 2), ATP6V1G2, ATP6G ATP6G2 NG38
Immunogen Species	Homo sapiens (Human)
Research Area	Others
Target Names	ATP6V1G2

Image



Immunofluorescence staining of A549 cells with CSB-PA002409LA01HU at 1:133, counter-stained with DAPI. The cells were fixed in 4% formaldehyde, permeabilized using 0.2% Triton X-100 and blocked in 10% normal Goat Serum. The cells were then incubated with the antibody overnight at 4°C. The secondary antibody was Alexa Fluor 488-conjugated AffiniPure Goat Anti-Rabbit IgG(H+L).



Western blot

All lanes: ATP6V1G2 antibody at 12 μ g/ml

Lane 1: Rat heart tissue

Lane 2: Mouse spleen tissue

Lane 3: Hela whole cell lysate

Lane 4: HepG2 whole cell lysate

Lane 5: A549 whole cell lysate

Lane 6: HT29 whole cell lysate

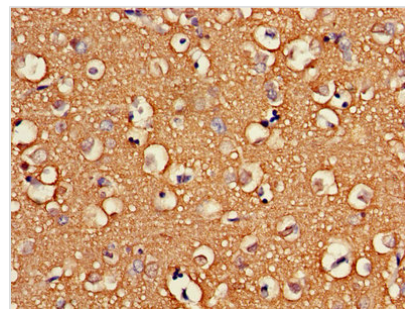
Lane 7: K562 whole cell lysate

Secondary

Goat polyclonal to rabbit IgG at 1/10000 dilution

Predicted band size: 14, 9 kDa

Observed band size: 14 kDa



Immunohistochemistry of paraffin-embedded

human brain tissue using CSB-

PA002409LA01HU at dilution of 1:100