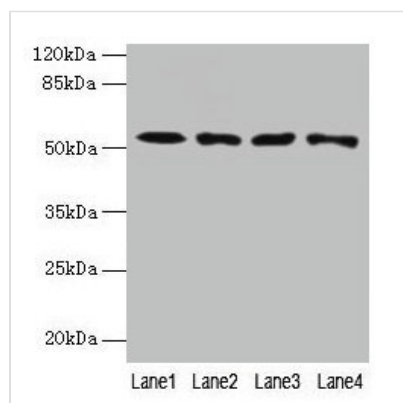




CAP2 Antibody

Product Code	CSB-PA004487LA01HU
Storage	Upon receipt, store at -20°C or -80°C. Avoid repeated freeze.
Uniprot No.	P40123
Immunogen	Recombinant Human Adenylyl cyclase-associated protein 2 protein (221-477AA)
Raised In	Rabbit
Species Reactivity	Human, Mouse
Tested Applications	ELISA, WB, IHC; Recommended dilution: WB:1:1000-1:5000, IHC:1:20-1:200
Form	Liquid
Conjugate	Non-conjugated
Storage Buffer	Preservative: 0.03% Proclin 300 Constituents: 50% Glycerol, 0.01M PBS, PH 7.4
Purification Method	>95%, Protein G purified
Isotype	IgG
Clonality	Polyclonal
Alias	Adenylyl cyclase-associated protein 2 (CAP 2), CAP2
Immunogen Species	Homo sapiens (Human)
Research Area	Signal Transduction
Target Names	CAP2

Image



Western blot

All lanes: CAP2 antibody at 4µg/ml

Lane 1: HepG2 whole cell lysate

Lane 2: Mouse muscle tissue

Lane 3: Mouse gonadal tissue

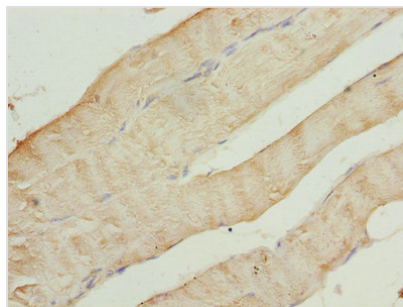
Lane 4: Hela whole cell lysate

Secondary

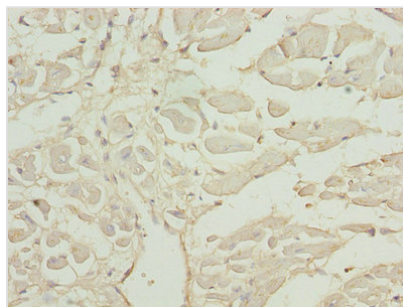
Goat polyclonal to rabbit IgG at 1/10000 dilution

Predicted band size: 53, 46, 25 kDa

Observed band size: 53 kDa



Immunohistochemistry of paraffin-embedded human skeletal muscle tissue using CSB-PA004487LA01HU at dilution of 1:100



Immunohistochemistry of paraffin-embedded human heart tissue using CSB-PA004487LA01HU at dilution of 1:100