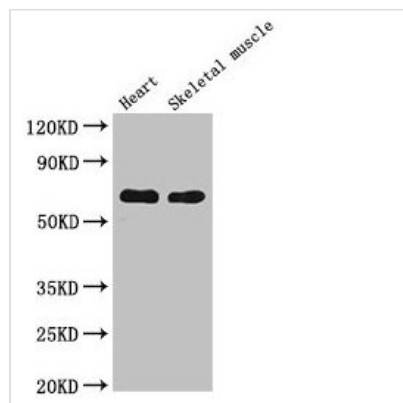




CES1 Antibody

Product Code	CSB-PA005258LA01HU
Storage	Upon receipt, store at -20°C or -80°C. Avoid repeated freeze.
Uniprot No.	P23141
Immunogen	Recombinant Human Liver carboxylesterase 1 protein (291-566AA)
Raised In	Rabbit
Species Reactivity	Human, Mouse
Tested Applications	ELISA, WB, IHC, IF; Recommended dilution: WB:1:500-1:5000, IHC:1:20-1:200, IF:1:50-1:200
Form	Liquid
Conjugate	Non-conjugated
Storage Buffer	Preservative: 0.03% Proclin 300 Constituents: 50% Glycerol, 0.01M PBS, PH 7.4
Purification Method	>95%, Protein G purified
Isotype	IgG
Clonality	Polyclonal
Alias	Liver carboxylesterase 1 (Acyl-coenzyme A:cholesterol acyltransferase) (ACAT) (Brain carboxylesterase hBr1) (Carboxylesterase 1) (CE-1) (hCE-1) (EC 3.1.1.1) (Cocaine carboxylesterase) (Egasyn) (HMSE) (Methylumbelliferyl-acetate deacetylase 1) (EC 3.1.1.56) (Monocyte/macrophage serine esterase) (Retinyl ester hydrolase) (REH) (Serine esterase 1) (Triacylglycerol hydrolase) (TGH), CES1, CES2 SES1
Immunogen Species	Homo sapiens (Human)
Research Area	Cardiovascular
Target Names	CES1

Image



Western Blot

Positive WB detected in: Mouse heart tissue, Mouse skeletal muscle tissue

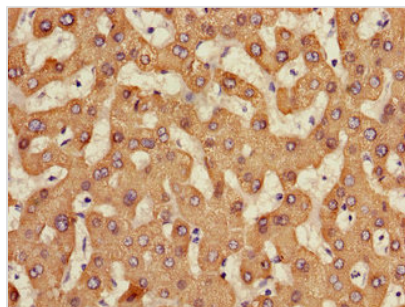
All lanes: CES1 antibody at 5µg/ml

Secondary

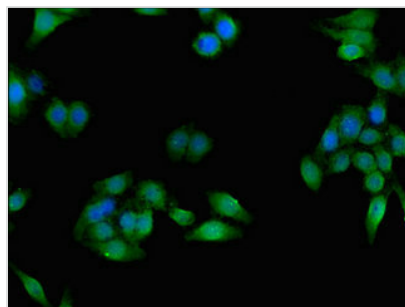
Goat polyclonal to rabbit IgG at 1/50000 dilution

Predicted band size: 63 kDa

Observed band size: 63 kDa



Immunohistochemistry of paraffin-embedded human liver tissue using CSB-PA005258LA01HU at dilution of 1:100



Immunofluorescent analysis of HepG2 cells using CSB-PA005258LA01HU at dilution of 1:100 and Alexa Fluor 488-conjugated AffiniPure Goat Anti-Rabbit IgG(H+L)

Usage

For Research Use Only. Not for use in diagnostic or therapeutic procedures.