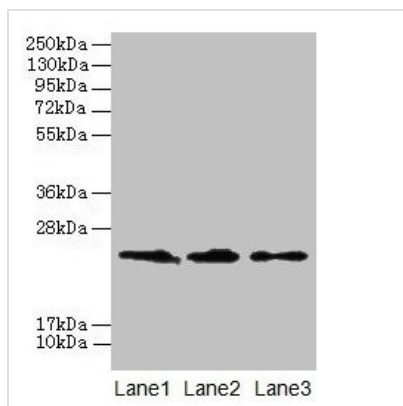




CLDN20 Antibody

Product Code	CSB-PA005501LA01HU
Storage	Upon receipt, store at -20°C or -80°C. Avoid repeated freeze.
Uniprot No.	P56880
Immunogen	Recombinant Human Claudin-20 protein (29-81AA)
Raised In	Rabbit
Species Reactivity	Human
Tested Applications	ELISA, WB, IF; Recommended dilution: WB:1:1000-1:5000, IF:1:50-1:200
Form	Liquid
Conjugate	Non-conjugated
Storage Buffer	Preservative: 0.03% Proclin 300 Constituents: 50% Glycerol, 0.01M PBS, PH 7.4
Purification Method	>95%, Protein G purified
Isotype	IgG
Clonality	Polyclonal
Alias	Claudin-20, CLDN20
Immunogen Species	Homo sapiens (Human)
Research Area	Others
Target Names	CLDN20

Image



Western blot

All lanes: CLDN20 antibody at 4μg/ml

Lane 1: A549 whole cell lysate

Lane 2: HepG2 whole cell lysate

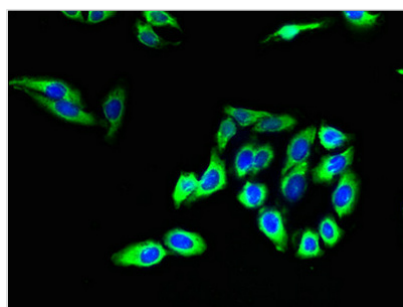
Lane 3: PC-3 whole cell lysate

Secondary

Goat polyclonal to rabbit IgG at 1/10000 dilution

Predicted band size: 24 kDa

Observed band size: 24 kDa



Immunofluorescent analysis of HepG2 cells using CSB-PA005501LA01HU at dilution of 1:100 and Alexa Fluor 488-conjugated AffiniPure Goat Anti-Rabbit IgG(H+L)

