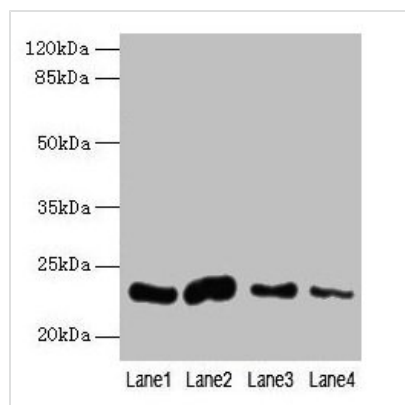




# CLEC3A Antibody

<b>Product Code</b>	CSB-PA005530LA01HU
<b>Storage</b>	Upon receipt, store at -20°C or -80°C. Avoid repeated freeze.
<b>Uniprot No.</b>	O75596
<b>Immunogen</b>	Recombinant Human C-type lectin domain family 3 member A protein (23-197AA)
<b>Raised In</b>	Rabbit
<b>Species Reactivity</b>	Human, Mouse
<b>Tested Applications</b>	ELISA, WB, IHC; Recommended dilution: WB:1:500-1:5000, IHC:1:20-1:200
<b>Form</b>	Liquid
<b>Conjugate</b>	Non-conjugated
<b>Storage Buffer</b>	Preservative: 0.03% Proclin 300 Constituents: 50% Glycerol, 0.01M PBS, PH 7.4
<b>Purification Method</b>	Antigen Affinity Purified
<b>Isotype</b>	IgG
<b>Clonality</b>	Polyclonal
<b>Alias</b>	C-type lectin domain family 3 member A (C-type lectin superfamily member 1) (Cartilage-derived C-type lectin), CLEC3A, CLECSF1
<b>Immunogen Species</b>	Homo sapiens (Human)
<b>Research Area</b>	Signal Transduction
<b>Target Names</b>	CLEC3A

## Image



### Western blot

All lanes: CLEC3A antibody at 0.4μg/ml

Lane 1: Mouse liver tissue

Lane 2: Mouse kidney tissue

Lane 3: Mouse brain tissue

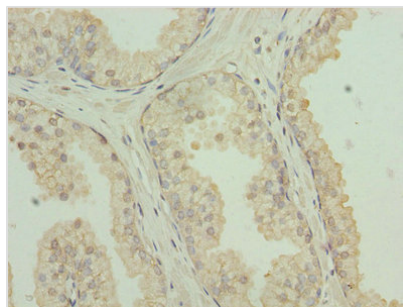
Lane 4: Mouse lung tissue

Secondary

Goat polyclonal to rabbit IgG at 1/10000 dilution

Predicted band size: 23 kDa

Observed band size: 23 kDa



Immunohistochemistry of paraffin-embedded human prostate cancer using CSB-PA005530LA01HU at dilution of 1:100