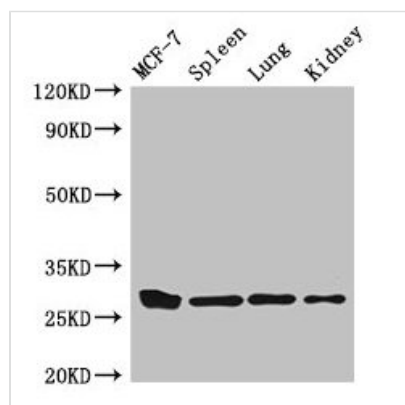




CMA1 Antibody

| | |
|----------------------------|--|
| Product Code | CSB-PA005599LA01HU |
| Storage | Upon receipt, store at -20°C or -80°C. Avoid repeated freeze. |
| Uniprot No. | P23946 |
| Immunogen | Recombinant Human Chymase protein (22-247AA) |
| Raised In | Rabbit |
| Species Reactivity | Human, Mouse |
| Tested Applications | ELISA, WB; Recommended dilution: WB:1:500-1:5000 |
| Form | Liquid |
| Conjugate | Non-conjugated |
| Storage Buffer | Preservative: 0.03% Proclin 300 Constituents: 50% Glycerol, 0.01M PBS, PH 7.4 |
| Purification Method | >95%, Protein G purified |
| Isotype | IgG |
| Clonality | Polyclonal |
| Alias | Chymase (EC 3.4.21.39) (Alpha-chymase) (Mast cell protease I), CMA1, CYH CYM |
| Immunogen Species | Homo sapiens (Human) |
| Research Area | Immunology |
| Target Names | CMA1 |

Image



Western Blot

Positive WB detected in: MCF-7 whole cell lysate, Mouse spleen tissue, Mouse lung tissue, Mouse kidney tissue

All lanes: CMA1 antibody at 3µg/ml

Secondary

Goat polyclonal to rabbit IgG at 1/50000 dilution

Predicted band size: 28, 15 kDa

Observed band size: 28 kDa