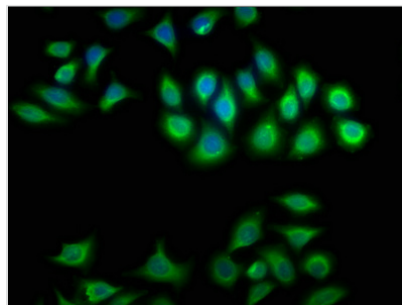




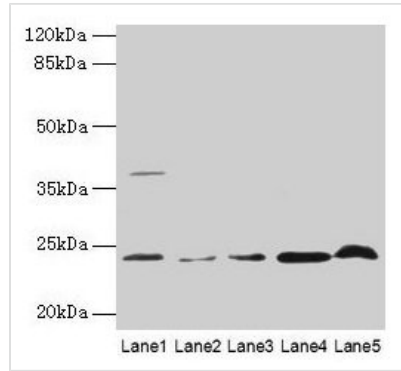
CRYBA1 Antibody

Product Code	CSB-PA006009LA01HU
Storage	Upon receipt, store at -20°C or -80°C. Avoid repeated freeze.
Uniprot No.	P05813
Immunogen	Recombinant Human Beta-crystallin A3 protein (1-215AA)
Raised In	Rabbit
Species Reactivity	Human, Mouse
Tested Applications	ELISA, WB, IHC, IF; Recommended dilution: WB:1:1000-1:5000, IHC:1:20-1:200, IF:1:50-1:200
Form	Liquid
Conjugate	Non-conjugated
Storage Buffer	Preservative: 0.03% Proclin 300 Constituents: 50% Glycerol, 0.01M PBS, PH 7.4
Purification Method	>95%, Protein G purified
Isotype	IgG
Clonality	Polyclonal
Alias	Beta-crystallin A3 [Cleaved into: Beta-crystallin A3, isoform A1, Delta4 form; Beta-crystallin A3, isoform A1, Delta7 form; Beta-crystallin A3, isoform A1, Delta8 form], CRYBA1, CRYB1
Immunogen Species	Homo sapiens (Human)
Research Area	Neuroscience
Target Names	CRYBA1

Image



Immunofluorescence staining of A549 cells with CSB-PA006009LA01HU at 1:100, counter-stained with DAPI. The cells were fixed in 4% formaldehyde, permeabilized using 0.2% Triton X-100 and blocked in 10% normal Goat Serum. The cells were then incubated with the antibody overnight at 4°C. The secondary antibody was Alexa Fluor 488-conjugated AffiniPure Goat Anti-Rabbit IgG(H+L).

**Western blot**All lanes: CRYBA1 antibody at 6 μ g/ml

Lane 1: Human placenta tissue

Lane 2: U251 whole cell lysate

Lane 3: U937 whole cell lysate

Lane 4: Mouse stomach tissue

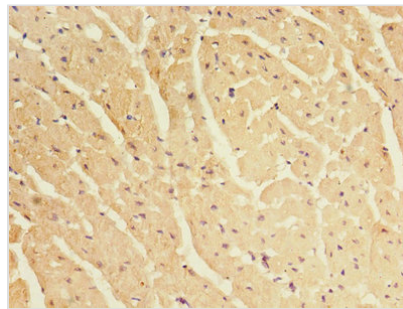
Lane 5: Mouse liver tissue

Secondary

Goat polyclonal to rabbit IgG at 1/10000 dilution

Predicted band size: 26, 24 kDa

Observed band size: 24 kDa



Immunohistochemistry of paraffin-embedded

human heart tissue using CSB-

PA006009LA01HU at dilution of 1:100

Usage

For Research Use Only. Not for use in diagnostic or therapeutic procedures.