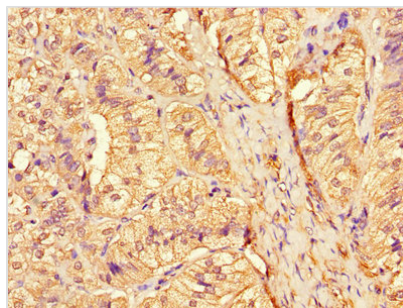




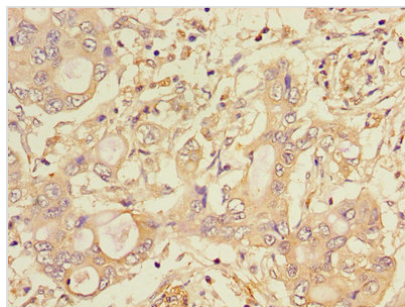
CTSA Antibody

Product Code	CSB-PA006184LA01HU
Storage	Upon receipt, store at -20°C or -80°C. Avoid repeated freeze.
Uniprot No.	P10619
Immunogen	Recombinant Human Lysosomal protective protein (30-327AA)
Raised In	Rabbit
Species Reactivity	Human
Tested Applications	ELISA, IHC, IF; Recommended dilution: IHC:1:20-1:200, IF:1:50-1:200
Form	Liquid
Conjugate	Non-conjugated
Storage Buffer	Preservative: 0.03% Proclin 300 Constituents: 50% Glycerol, 0.01M PBS, PH 7.4
Purification Method	>95%, Protein G purified
Isotype	IgG
Clonality	Polyclonal
Alias	Lysosomal protective protein (EC 3.4.16.5) (Carboxypeptidase C) (Carboxypeptidase L) (Cathepsin A) (Protective protein cathepsin A) (PPCA) (Protective protein for beta-galactosidase) [Cleaved into: Lysosomal protective protein 32 kDa chain; Lysosomal protective protein 20 kDa chain], CTSA, PPGb
Immunogen Species	Homo sapiens (Human)
Research Area	Signal Transduction
Target Names	CTSA

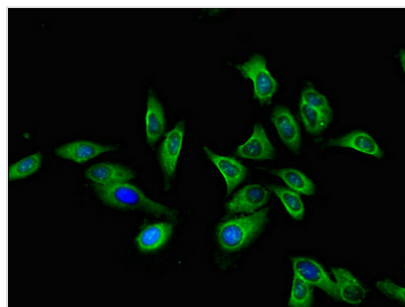
Image



Immunohistochemistry of paraffin-embedded human adrenal gland tissue using CSB-PA006184LA01HU at dilution of 1:100



Immunohistochemistry of paraffin-embedded human pancreatic cancer using CSB-PA006184LA01HU at dilution of 1:100



Immunofluorescent analysis of HeLa cells using CSB-PA006184LA01HU at dilution of 1:100 and Alexa Fluor 488-conjugated AffiniPure Goat Anti-Rabbit IgG(H+L)

Usage

For Research Use Only. Not for use in diagnostic or therapeutic procedures.