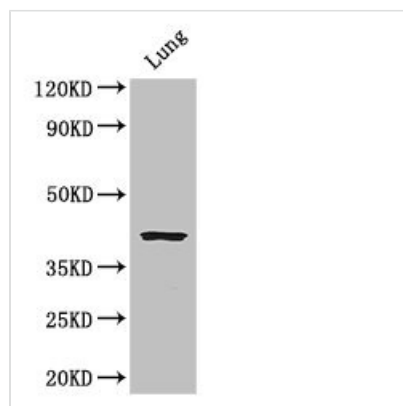




CYSLTR1 Antibody

Product Code	CSB-PA006465LA01HU
Storage	Upon receipt, store at -20°C or -80°C. Avoid repeated freeze.
Uniprot No.	Q9Y271
Immunogen	Recombinant Human Cysteinyl leukotriene receptor 1 protein (298-337AA)
Raised In	Rabbit
Species Reactivity	Human, Mouse
Tested Applications	ELISA, WB, IHC, IF; Recommended dilution: WB:1:1000-1:5000, IHC:1:20-1:200, IF:1:50-1:200
Form	Liquid
Conjugate	Non-conjugated
Storage Buffer	Preservative: 0.03% Proclin 300 Constituents: 50% Glycerol, 0.01M PBS, PH 7.4
Purification Method	>95%, Protein G purified
Isotype	IgG
Clonality	Polyclonal
Alias	Cysteinyl leukotriene receptor 1 (CysLTR1) (Cysteinyl leukotriene D4 receptor) (LTD4 receptor) (G-protein coupled receptor HG55) (HMTMF81), CYSLTR1, CYSLT1
Immunogen Species	Homo sapiens (Human)
Research Area	Neuroscience
Target Names	CYSLTR1

Image



Western Blot

Positive WB detected in: Mouse lung tissue

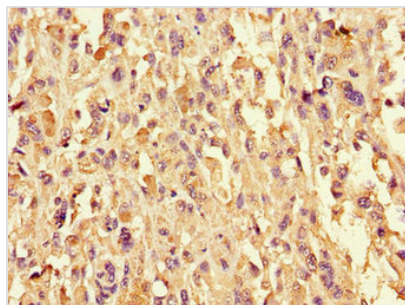
All lanes: CYSLTR1 antibody at 3µg/ml

Secondary

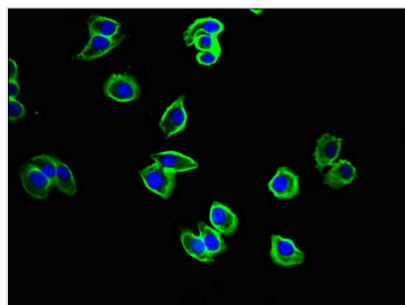
Goat polyclonal to rabbit IgG at 1/50000 dilution

Predicted band size: 39 kDa

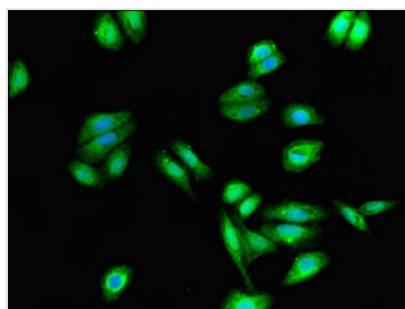
Observed band size: 39 kDa



Immunohistochemistry of paraffin-embedded human melanoma using CSB-PA006465LA01HU at dilution of 1:100



Immunofluorescent analysis of A375 cells using CSB-PA006465LA01HU at dilution of 1:100 and Alexa Fluor 488-conjugated AffiniPure Goat Anti-Rabbit IgG(H+L)



Immunofluorescent analysis of HepG2 cells using CSB-PA006465LA01HU at dilution of 1:100 and Alexa Fluor 488-conjugated AffiniPure Goat Anti-Rabbit IgG(H+L)

Usage

For Research Use Only. Not for use in diagnostic or therapeutic procedures.