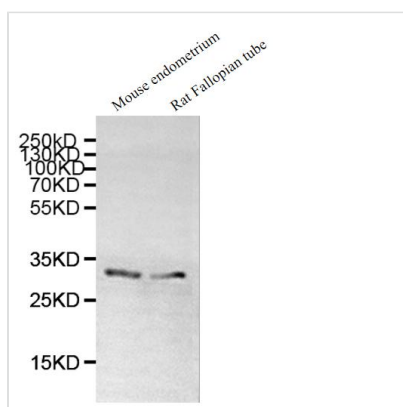




DNALI1 Antibody

Product Code	CSB-PA007047LA01HU
Storage	Upon receipt, store at -20°C or -80°C. Avoid repeated freeze.
Uniprot No.	O14645
Immunogen	Synthesized peptide derived from human DNALI1
Raised In	Rabbit
Species Reactivity	Human, Mouse, Rat
Tested Applications	ELISA, WB; Recommended dilution: WB:1:500-1:2000
Form	Liquid
Conjugate	Non-conjugated
Storage Buffer	Liquid in PBS containing 50% glycerol, 0.5% BSA and 0.02% sodium azide
Purification Method	Antigen Affinity Purified
Isotype	IgG
Clonality	Polyclonal
Product Type	Polyclonal Antibody
Immunogen Species	Homo sapiens (Human)
Research Area	Signal Transduction
Target Names	DNALI1

Image

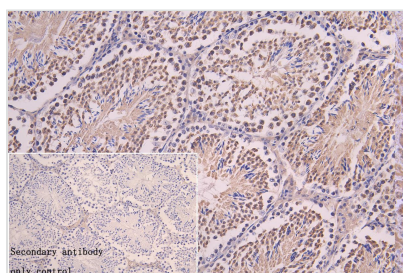


Western Blot

Positive WB detected in: Mouse endometrium tissue lysate, Rat Fallopian tube tissue lysate
All lanes: DNALI1 antibody at 1:1000

Secondary

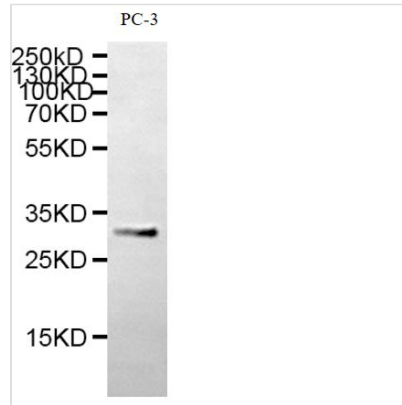
Goat polyclonal to rabbit IgG at 1/50000 dilution
Predicted band size: 30, 16 kDa
Observed band size: 30 kDa



IHC image of CSB-PA007047LA01HU diluted at 1:200 and staining in paraffin-embedded mouse testis tissue performed on a Leica Bond™ system. After dewaxing and hydration, antigen retrieval was mediated by high pressure in a citrate buffer (pH 6.0). Section was blocked with 10% normal goat serum 30min at RT. Then primary antibody (1% BSA) was incubated at 4°C overnight. The primary is detected by a Goat anti-rabbit polymer IgG labeled by HRP and



visualized using 0.05% DAB. Secondary antibody only control: uses 1% BSA instead of primary antibody

**Western Blot**

Positive WB detected in: PC-3 cell lysate

All lanes: DNAL1 antibody at 1:1000

Secondary

Goat polyclonal to rabbit IgG at 1/50000 dilution

Predicted band size: 30, 16 kDa

Observed band size: 30 kDa

Usage

For Research Use Only. Not for use in diagnostic or therapeutic procedures.