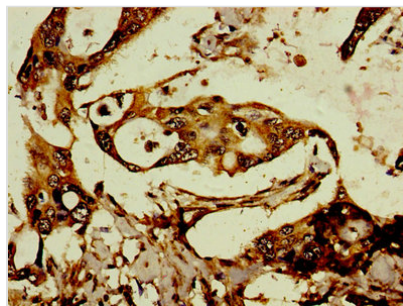




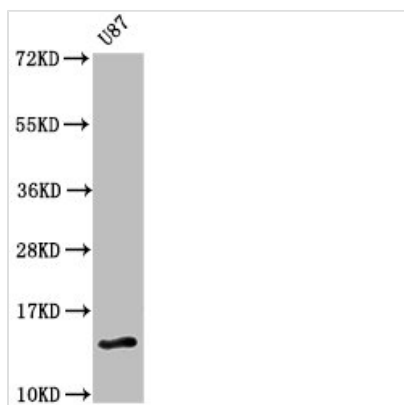
# RTL8C Antibody

<b>Product Code</b>	CSB-PA008044LA01HU
<b>Storage</b>	Upon receipt, store at -20°C or -80°C. Avoid repeated freeze.
<b>Uniprot No.</b>	A6ZKI3
<b>Immunogen</b>	Recombinant Human Retrotransposon Gag-like protein 8B protein (1-113AA)
<b>Raised In</b>	Rabbit
<b>Species Reactivity</b>	Human
<b>Tested Applications</b>	ELISA, WB, IHC; Recommended dilution: WB:1:500-1:5000, IHC:1:20-1:200
<b>Form</b>	Liquid
<b>Conjugate</b>	Non-conjugated
<b>Storage Buffer</b>	Preservative: 0.03% Proclin 300 Constituents: 50% Glycerol, 0.01M PBS, PH 7.4
<b>Purification Method</b>	>95%, Protein G purified
<b>Isotype</b>	IgG
<b>Clonality</b>	Polyclonal
<b>Alias</b>	Retrotransposon Gag-like protein 8B (Mammalian retrotransposon derived protein 8C), RTL8C, CXX1 FAM127A MAR8 MAR8C MART8
<b>Immunogen Species</b>	Homo sapiens (Human)
<b>Research Area</b>	Cell Biology
<b>Target Names</b>	RTL8C

## Image



Immunohistochemistry of paraffin-embedded human pancreatic cancer using CSB-PA008044LA01HU at dilution of 1:100



#### Western Blot

Positive WB detected in: U87 whole cell lysate

All lanes: RTL8C antibody at 3µg/ml

Secondary

Goat polyclonal to rabbit IgG at 1/50000 dilution

Predicted band size: 14 kDa

Observed band size: 14 kDa