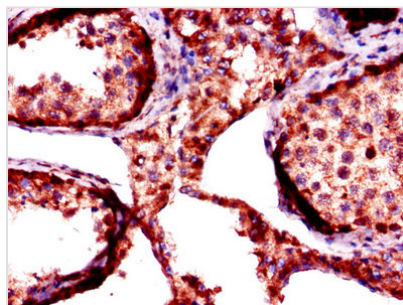




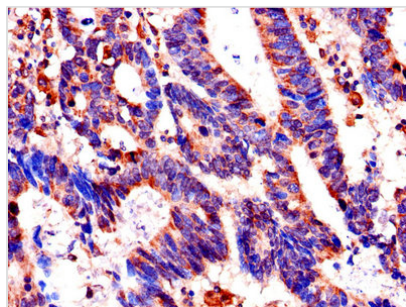
# FKBP6 Antibody

<b>Product Code</b>	CSB-PA008702LA01HU
<b>Storage</b>	Upon receipt, store at -20°C or -80°C. Avoid repeated freeze.
<b>Uniprot No.</b>	O75344
<b>Immunogen</b>	Recombinant Human Inactive peptidyl-prolyl cis-trans isomerase FKBP6 protein (101-327AA)
<b>Raised In</b>	Rabbit
<b>Species Reactivity</b>	Human
<b>Tested Applications</b>	ELISA, WB, IHC, IF; Recommended dilution: WB:1:500-1:5000, IHC:1:20-1:200, IF:1:50-1:200
<b>Form</b>	Liquid
<b>Conjugate</b>	Non-conjugated
<b>Storage Buffer</b>	Preservative: 0.03% Proclin 300 Constituents: 50% Glycerol, 0.01M PBS, PH 7.4
<b>Purification Method</b>	>95%, Protein G purified
<b>Isotype</b>	IgG
<b>Clonality</b>	Polyclonal
<b>Alias</b>	Inactive peptidyl-prolyl cis-trans isomerase FKBP6 (Inactive PPIase FKBP6) (36 kDa FK506-binding protein) (36 kDa FKBP) (FKBP-36) (FK506-binding protein 6) (FKBP-6) (Immunophilin FKBP36), FKBP6, FKBP36
<b>Immunogen Species</b>	Homo sapiens (Human)
<b>Research Area</b>	Immunology
<b>Target Names</b>	FKBP6

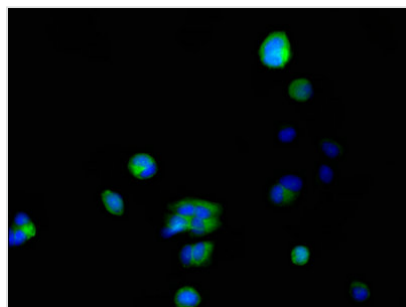
## Image



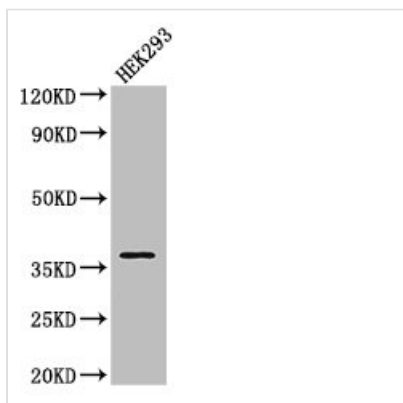
Immunohistochemistry of paraffin-embedded human testis tissue using CSB-PA008702LA01HU at dilution of 1:100



Immunohistochemistry of paraffin-embedded human colon cancer using CSB-PA008702LA01HU at dilution of 1:100



Immunofluorescent analysis of MCF-7 cells using CSB-PA008702LA01HU at dilution of 1:100 and Alexa Fluor 488-conjugated AffiniPure Goat Anti-Rabbit IgG(H+L)



Western Blot

Positive WB detected in: HEK293 whole cell lysate

All lanes: FKBP6 antibody at 4 $\mu$ g/ml

Secondary

Goat polyclonal to rabbit IgG at 1/50000 dilution

Predicted band size: 38, 37, 34 kDa

Observed band size: 38 kDa

## Usage

For Research Use Only. Not for use in diagnostic or therapeutic procedures.