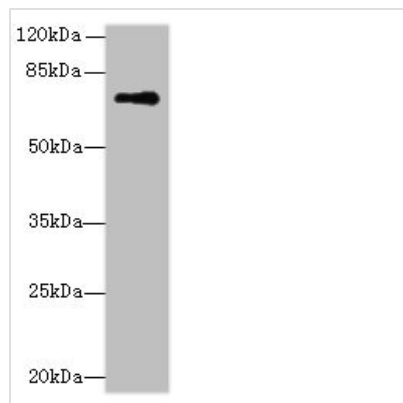




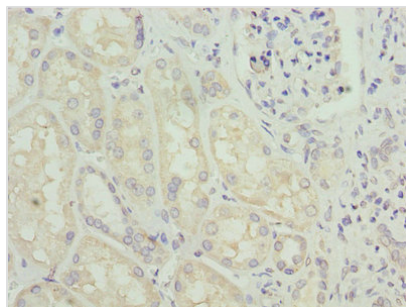
# GLS Antibody

|                            |   |
|----------------------------|---|
| <b>Product Code</b>        | CSB-PA009528DA01HU  |
| <b>Storage</b>             | Upon receipt, store at -20°C or -80°C. Avoid repeated freeze.   |
| <b>Uniprot No.</b>         | O94925  |
| <b>Immunogen</b>           | Recombinant Human Glutaminase kidney isoform, mitochondrial protein (616-669AA)   |
| <b>Raised In</b>           | Rabbit  |
| <b>Species Reactivity</b>  | Human, Mouse  |
| <b>Tested Applications</b> | ELISA, WB, IHC; Recommended dilution: WB:1:1000-1:5000, IHC:1:20-1:200  |
| <b>Form</b>                | Liquid  |
| <b>Conjugate</b>           | Non-conjugated  |
| <b>Storage Buffer</b>      | Preservative: 0.03% Proclin 300<br>Constituents: 50% Glycerol, 0.01M PBS, PH 7.4  |
| <b>Purification Method</b> | >95%, Protein G purified  |
| <b>Isotype</b>             | IgG   |
| <b>Clonality</b>           | Polyclonal  |
| <b>Alias</b>               | Glutaminase kidney isoform, mitochondrial (GLS) (EC 3.5.1.2) (K-glutaminase) (L-glutamine amidohydrolase), GLS, GLS1 KIAA0838 |
| <b>Immunogen Species</b>   | Homo sapiens (Human)  |
| <b>Research Area</b>       | Neuroscience  |
| <b>Target Names</b>        | GLS   |

## Image



Western blot  
 All lanes: GLS antibody at 5µg/ml + Mouse brain tissue  
 Secondary  
 Goat polyclonal to rabbit IgG at 1/10000 dilution  
 Predicted band size: 74, 18, 66 kDa  
 Observed band size: 74 kDa



Immunohistochemistry of paraffin-embedded human kidney tissue using CSB-PA009528DA01HU at dilution of 1:100

---

**Usage**

For Research Use Only. Not for use in diagnostic or therapeutic procedures.