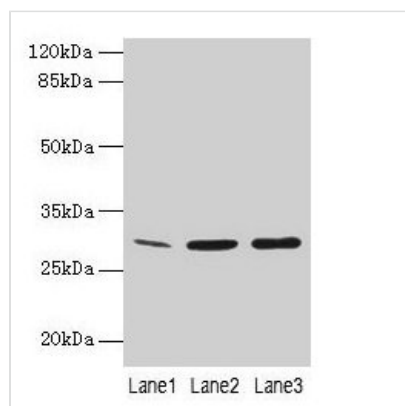




# GTF2F2 Antibody

<b>Product Code</b>	CSB-PA010005LA01HU
<b>Storage</b>	Upon receipt, store at -20°C or -80°C. Avoid repeated freeze.
<b>Uniprot No.</b>	P13984
<b>Immunogen</b>	Recombinant Human General transcription factor IIF subunit 2 protein (2-249AA)
<b>Raised In</b>	Rabbit
<b>Species Reactivity</b>	Human, Mouse
<b>Tested Applications</b>	ELISA, WB; Recommended dilution: WB:1:1000-1:5000
<b>Form</b>	Liquid
<b>Conjugate</b>	Non-conjugated
<b>Storage Buffer</b>	Preservative: 0.03% Proclin 300 Constituents: 50% Glycerol, 0.01M PBS, PH 7.4
<b>Purification Method</b>	>95%, Protein G purified
<b>Isotype</b>	IgG
<b>Clonality</b>	Polyclonal
<b>Alias</b>	General transcription factor IIF subunit 2 (EC 3.6.4.12) (ATP-dependent helicase GTF2F2) (General transcription factor IIF 30 kDa subunit) (Transcription initiation factor IIF subunit beta) (TFIIF-beta) (Transcription initiation factor RAP30), GTF2F2, RAP30
<b>Immunogen Species</b>	Homo sapiens (Human)
<b>Research Area</b>	Epigenetics and Nuclear Signaling
<b>Target Names</b>	GTF2F2

## Image



### Western Blot

All lanes: GTF2F2 antibody at 16µg/ml

Lane 1: Mouse spleen tissue

Lane 2: K562 whole cell lysate

Lane 3: A549 whole cell lysate

Secondary

Goat polyclonal to rabbit IgG at 1/10000 dilution

Predicted band size: 29 kDa

Observed band size: 29 kDa

## Usage

For Research Use Only. Not for use in diagnostic or therapeutic procedures.