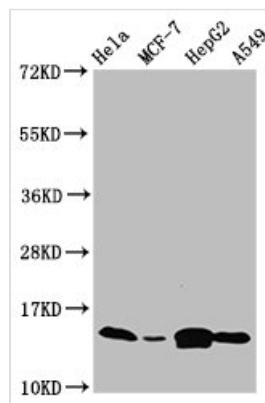




IFITM2 Antibody

Product Code	CSB-PA011025LA01HU
Storage	Upon receipt, store at -20°C or -80°C. Avoid repeated freeze.
Uniprot No.	Q01629
Immunogen	Recombinant Human Interferon-induced transmembrane protein 2 protein (1-56AA)
Raised In	Rabbit
Species Reactivity	Human
Tested Applications	ELISA, WB, IHC, IF; Recommended dilution: WB:1:500-1:5000, IHC:1:500-1:1000, IF:1:50-1:500
Form	Liquid
Conjugate	Non-conjugated
Storage Buffer	Preservative: 0.03% Proclin 300 Constituents: 50% Glycerol, 0.01M PBS, PH 7.4
Purification Method	>95%, Protein G purified
Isotype	IgG
Clonality	Polyclonal
Alias	Interferon-induced transmembrane protein 2 (Dispanin subfamily A member 2c) (DSPA2c) (Interferon-inducible protein 1-8D), IFITM2
Immunogen Species	Homo sapiens (Human)
Research Area	Immunology
Target Names	IFITM2

Image



Western Blot

Positive WB detected in: HeLa whole cell lysate, MCF-7 whole cell lysate, HepG2 whole cell lysate, A549 whole cell lysate

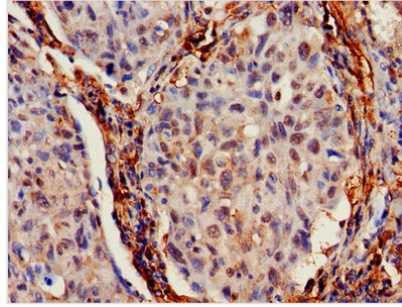
All lanes: IFITM2 antibody at 4.7µg/ml

Secondary

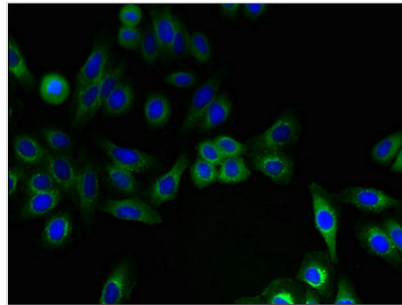
Goat polyclonal to rabbit IgG at 1/50000 dilution

Predicted band size: 15 kDa

Observed band size: 15 kDa



IHC image of CSB-PA011025LA01HU diluted at 1:700 and staining in paraffin-embedded human lung cancer performed on a Leica BondTM system. After dewaxing and hydration, antigen retrieval was mediated by high pressure in a citrate buffer (pH 6.0). Section was blocked with 10% normal goat serum 30min at RT. Then primary antibody (1% BSA) was incubated at 4°C overnight. The primary is detected by a biotinylated secondary antibody and visualized using an HRP conjugated SP system.



Immunofluorescent analysis of HepG2 cells using CSB-PA011025LA01HU at dilution of 1:100 and Alexa Fluor 488-conjugated AffiniPure Goat Anti-Rabbit IgG(H+L)