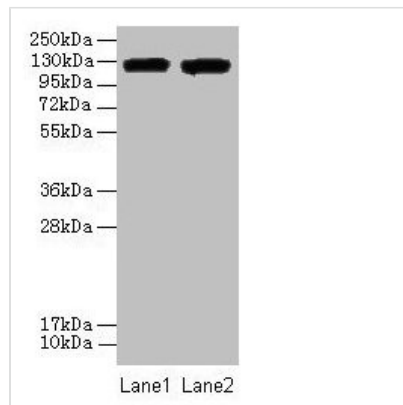




ITGAL Antibody

Product Code	CSB-PA011875LA01HU
Storage	Upon receipt, store at -20°C or -80°C. Avoid repeated freeze.
Uniprot No.	P20701
Immunogen	Recombinant Human Integrin alpha-L protein (201-500AA)
Raised In	Rabbit
Species Reactivity	Human
Tested Applications	ELISA, WB, IHC, IF; Recommended dilution: WB:1:500-1:2000, IHC:1:20-1:200, IF:1:50-1:200
Form	Liquid
Conjugate	Non-conjugated
Storage Buffer	Preservative: 0.03% Proclin 300 Constituents: 50% Glycerol, 0.01M PBS, PH 7.4
Purification Method	>95%, Protein G purified
Isotype	IgG
Clonality	Polyclonal
Alias	Integrin alpha-L (CD11 antigen-like family member A) (Leukocyte adhesion glycoprotein LFA-1 alpha chain) (LFA-1A) (Leukocyte function-associated molecule 1 alpha chain) (CD antigen CD11a), ITGAL, CD11A
Immunogen Species	Homo sapiens (Human)
Research Area	Signal Transduction
Target Names	ITGAL

Image



Western blot

All lanes: ITGAL antibody at 8µg/ml

Lane 1: A549 whole cell lysate

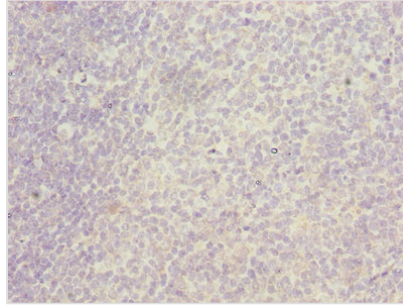
Lane 2: HepG2 whole cell lysate

Secondary

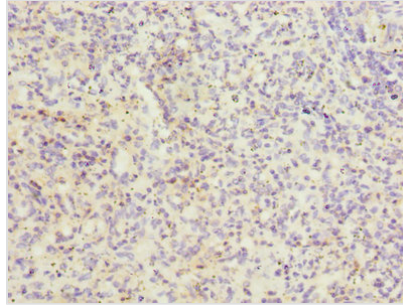
Goat polyclonal to rabbit IgG at 1/10000 dilution

Predicted band size: 129, 135, 120 kDa

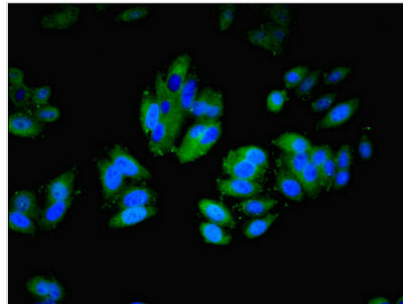
Observed band size: 129 kDa



Immunohistochemistry of paraffin-embedded human tonsil tissue using CSB-PA011875LA01HU at dilution of 1:100



Immunohistochemistry of paraffin-embedded human spleen tissue using CSB-PA011875LA01HU at dilution of 1:100



Immunofluorescent analysis of HepG2 cells using CSB-PA011875LA01HU at dilution of 1:100 and Alexa Fluor 488-conjugated AffiniPure Goat Anti-Rabbit IgG(H+L)