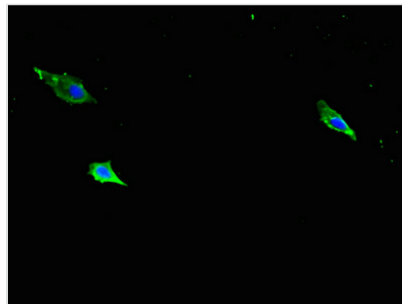




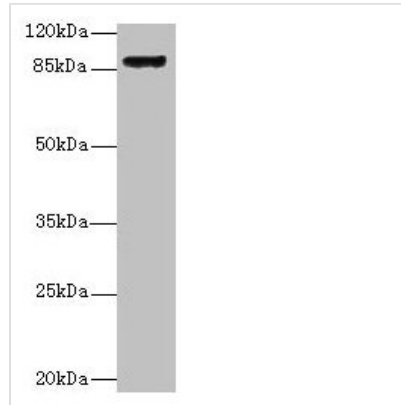
# Itgb1 Antibody

<b>Product Code</b>	CSB-PA011880LA01MO
<b>Storage</b>	Upon receipt, store at -20°C or -80°C. Avoid repeated freeze.
<b>Uniprot No.</b>	P09055
<b>Immunogen</b>	Recombinant Mouse Integrin beta-1 protein (21-728AA)
<b>Raised In</b>	Rabbit
<b>Species Reactivity</b>	Mouse, Human
<b>Tested Applications</b>	ELISA, WB, IF; Recommended dilution: WB:1:1000-1:5000, IF:1:50-1:200
<b>Form</b>	Liquid
<b>Conjugate</b>	Non-conjugated
<b>Storage Buffer</b>	Preservative: 0.03% Proclin 300 Constituents: 50% Glycerol, 0.01M PBS, PH 7.4
<b>Purification Method</b>	>95%, Protein G purified
<b>Isotype</b>	IgG
<b>Clonality</b>	Polyclonal
<b>Alias</b>	Integrin beta-1 (Fibronectin receptor subunit beta) (VLA-4 subunit beta) (CD antigen CD29), Itgb1
<b>Immunogen Species</b>	Mus musculus (Mouse)
<b>Research Area</b>	Neuroscience
<b>Target Names</b>	Itgb1

## Image



Immunofluorescent analysis of HeLa cells using CSB-PA011880LA01MO at dilution of 1:100 and Alexa Fluor 488-conjugated AffiniPure Goat Anti-Rabbit IgG(H+L)

**Western blot**

All lanes: Itgb1 antibody at 16 $\mu$ g/ml + U87 whole cell lysate

Secondary

Goat polyclonal to rabbit IgG at 1/10000 dilution

Predicted band size: 89 kDa

Observed band size: 89 kDa

**Usage**

For Research Use Only. Not for use in diagnostic or therapeutic procedures.