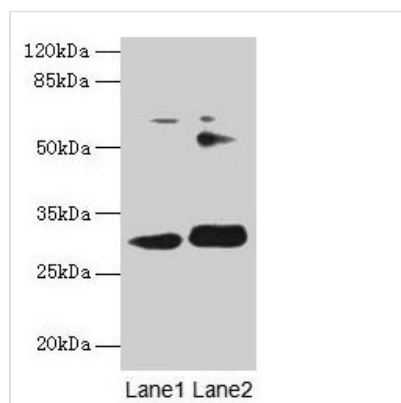




ITM2A Antibody

Product Code	CSB-PA011903LA01HU
Storage	Upon receipt, store at -20°C or -80°C. Avoid repeated freeze.
Uniprot No.	O43736
Immunogen	Recombinant Human Integral membrane protein 2A protein (79-263AA)
Raised In	Rabbit
Species Reactivity	Human
Tested Applications	ELISA, WB, IHC, IF; Recommended dilution: WB:1:500-1:2000, IHC:1:20-1:200, IF:1:50-1:200
Form	Liquid
Conjugate	Non-conjugated
Storage Buffer	Preservative: 0.03% Proclin 300 Constituents: 50% Glycerol, 0.01M PBS, PH 7.4
Purification Method	Antigen Affinity Purified
Isotype	IgG
Clonality	Polyclonal
Alias	Integral membrane protein 2A (Protein E25), ITM2A
Immunogen Species	Homo sapiens (Human)
Research Area	Cell Biology
Target Names	ITM2A

Image



Western blot

All lanes: ITM2A antibody at 0.3µg/ml

Lane 1: HL60 whole cell lysate

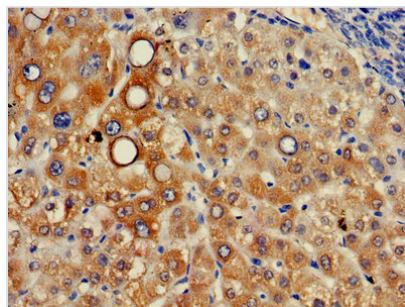
Lane 2: SH-SY5Y whole cell lysate

Secondary

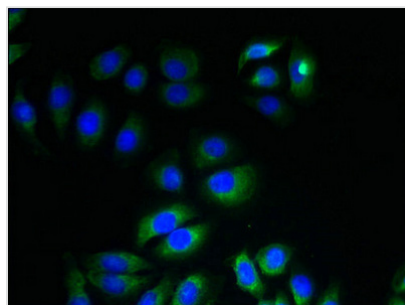
Goat polyclonal to rabbit IgG at 1/10000 dilution

Predicted band size: 30, 25 kDa

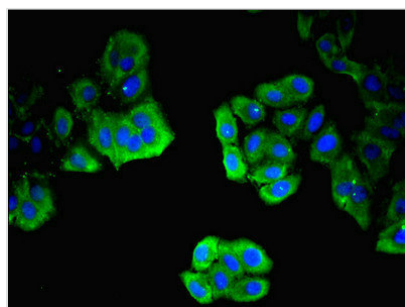
Observed band size: 30 kDa



Immunohistochemistry of paraffin-embedded human liver tissue using CSB-PA011903LA01HU at dilution of 1:100



Immunofluorescent analysis of A549 cells using CSB-PA011903LA01HU at dilution of 1:100 and Alexa Fluor 488-conjugated AffiniPure Goat Anti-Rabbit IgG(H+L)



Immunofluorescent analysis of HepG2 cells using CSB-PA011903LA01HU at dilution of 1:100 and Alexa Fluor 488-conjugated AffiniPure Goat Anti-Rabbit IgG(H+L)

Usage

For Research Use Only. Not for use in diagnostic or therapeutic procedures.