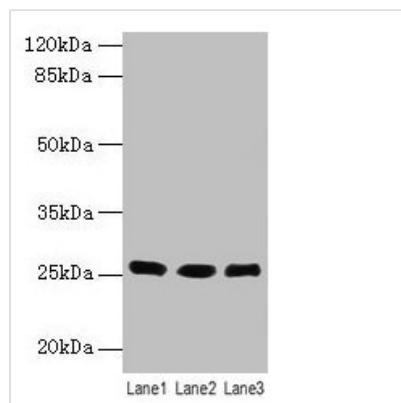




LIN7A Antibody

| | |
|----------------------------|--|
| Product Code | CSB-PA012963LA01HU |
| Storage | Upon receipt, store at -20°C or -80°C. Avoid repeated freeze. |
| Uniprot No. | O14910 |
| Immunogen | Recombinant Human Protein lin-7 homolog A protein (1-233AA) |
| Raised In | Rabbit |
| Species Reactivity | Human, Mouse |
| Tested Applications | ELISA, WB; Recommended dilution: WB:1:1000-1:5000 |
| Form | Liquid |
| Conjugate | Non-conjugated |
| Storage Buffer | Preservative: 0.03% Proclin 300 Constituents: 50% Glycerol, 0.01M PBS, PH 7.4 |
| Purification Method | >95%, Protein G purified |
| Isotype | IgG |
| Clonality | Polyclonal |
| Alias | Protein lin-7 homolog A (Lin-7A) (hLin-7) (Mammalian lin-seven protein 1) (MALS-1) (Tax interaction protein 33) (TIP-33) (Vertebrate lin-7 homolog 1) (Veli-1), LIN7A, MALS1 VELI1 |
| Immunogen Species | Homo sapiens (Human) |
| Research Area | Neuroscience |
| Target Names | LIN7A |

Image



Western blot
 All lanes: LIN7A antibody at 6µg/ml
 Lane 1: Human placenta tissue
 Lane 2: Mouse kidney tissue
 Lane 3: Mouse liver tissue
 Secondary
 Goat polyclonal to rabbit IgG at 1/10000 dilution
 Predicted band size: 26 kDa
 Observed band size: 26 kDa

Usage

For Research Use Only. Not for use in diagnostic or therapeutic procedures.