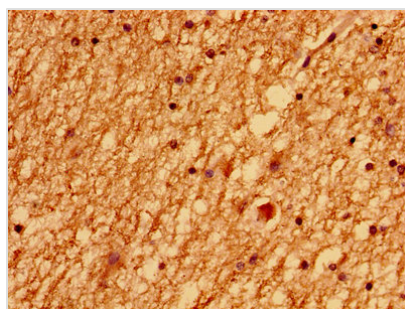




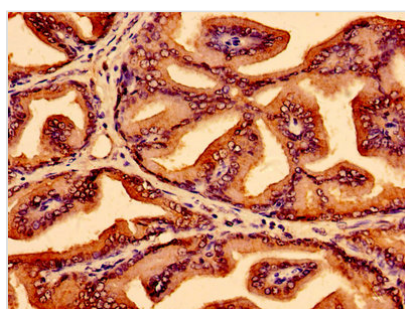
LSM1 Antibody

Product Code	CSB-PA013199LA01HU
Storage	Upon receipt, store at -20°C or -80°C. Avoid repeated freeze.
Uniprot No.	O15116
Immunogen	Recombinant Human U6 snRNA-associated Sm-like protein LSm1 protein (1-133AA)
Raised In	Rabbit
Species Reactivity	Human
Tested Applications	ELISA, IHC; Recommended dilution: IHC:1:20-1:200
Form	Liquid
Conjugate	Non-conjugated
Storage Buffer	Preservative: 0.03% Proclin 300 Constituents: 50% Glycerol, 0.01M PBS, PH 7.4
Purification Method	>95%, Protein G purified
Isotype	IgG
Clonality	Polyclonal
Alias	U6 snRNA-associated Sm-like protein LSm1 (Cancer-associated Sm-like) (Small nuclear ribonuclear CaSm), LSM1, CASM
Immunogen Species	Homo sapiens (Human)
Research Area	Tags & Cell Markers
Target Names	LSM1

Image



Immunohistochemistry of paraffin-embedded human brain tissue using CSB-PA013199LA01HU at dilution of 1:100



Immunohistochemistry of paraffin-embedded human prostate tissue using CSB-PA013199LA01HU at dilution of 1:100



Usage

For Research Use Only. Not for use in diagnostic or therapeutic procedures.