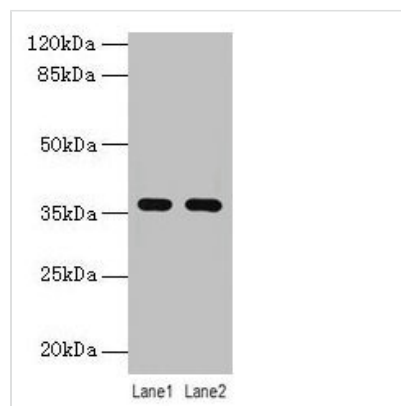




# LYPD3 Antibody

|                            |  |
|----------------------------|--|
| <b>Product Code</b>        | CSB-PA013263LA01HU   |
| <b>Storage</b>             | Upon receipt, store at -20°C or -80°C. Avoid repeated freeze.  |
| <b>Uniprot No.</b>         | O95274   |
| <b>Immunogen</b>           | Recombinant Human Ly6/PLAUR domain-containing protein 3 protein (31-326AA)   |
| <b>Raised In</b>           | Rabbit   |
| <b>Species Reactivity</b>  | Human, Mouse   |
| <b>Tested Applications</b> | ELISA, WB; Recommended dilution: WB:1:1000-1:5000  |
| <b>Form</b>                | Liquid   |
| <b>Conjugate</b>           | Non-conjugated   |
| <b>Storage Buffer</b>      | Preservative: 0.03% Proclin 300<br>Constituents: 50% Glycerol, 0.01M PBS, PH 7.4   |
| <b>Purification Method</b> | >95%, Protein G purified   |
| <b>Isotype</b>             | IgG  |
| <b>Clonality</b>           | Polyclonal   |
| <b>Alias</b>               | Ly6/PLAUR domain-containing protein 3 (GPI-anchored metastasis-associated protein C4.4A homolog) (Matrigel-induced gene C4 protein) (MIG-C4), LYPD3, C4.4A |
| <b>Immunogen Species</b>   | Homo sapiens (Human)   |
| <b>Research Area</b>       | Cancer   |
| <b>Target Names</b>        | LYPD3  |

## Image



### Western blot

All lanes: LYPD3 antibody at 4µg/ml

Lane 1: MCF-7 whole cell lysate

Lane 2: Mouse stomach tissue

Secondary

Goat polyclonal to rabbit IgG at 1/10000 dilution

Predicted band size: 36 kDa

Observed band size: 36 kDa