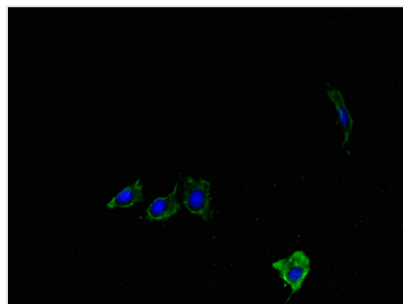




Lypla1 Antibody

Product Code	CSB-PA013268LA01MO
Storage	Upon receipt, store at -20°C or -80°C. Avoid repeated freeze.
Uniprot No.	P97823
Immunogen	Recombinant Mouse Acyl-protein thioesterase 1 protein (1-230AA)
Raised In	Rabbit
Species Reactivity	Mouse
Tested Applications	ELISA, IF; Recommended dilution: IF:1:50-1:200
Form	Liquid
Conjugate	Non-conjugated
Storage Buffer	Preservative: 0.03% Proclin 300 Constituents: 50% Glycerol, 0.01M PBS, PH 7.4
Purification Method	>95%, Protein G purified
Isotype	IgG
Clonality	Polyclonal
Alias	Acyl-protein thioesterase 1 (APT-1) (EC 3.1.2.-) (Lysophospholipase 1) (Lysophospholipase I) (LPL-I) (LysoPLA I), Lypla1, Apt1 Pla1a
Immunogen Species	Mus musculus (Mouse)
Research Area	Signal Transduction
Target Names	Lypla1

Image



Immunofluorescent analysis of HeLa cells using CSB-PA013268LA01MO at dilution of 1:100 and Alexa Fluor 488-conjugated AffiniPure Goat Anti-Rabbit IgG(H+L)