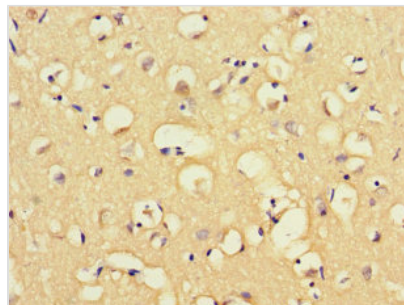


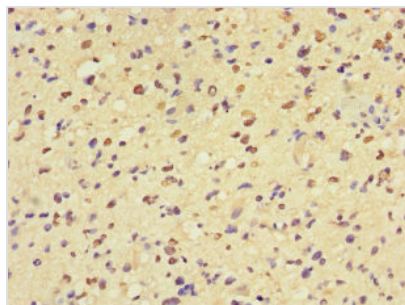


MAP3K8 Antibody

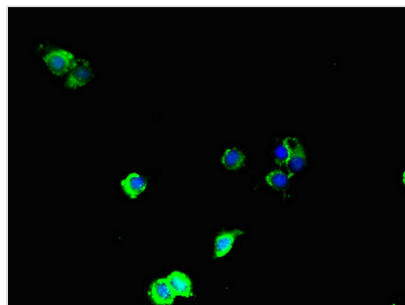
Product Code	CSB-PA013433LA01HU
Storage	Upon receipt, store at -20°C or -80°C. Avoid repeated freeze.
Uniprot No.	P41279
Immunogen	Recombinant Human Mitogen-activated protein kinase kinase kinase 8 protein (1-300AA)
Raised In	Rabbit
Species Reactivity	Human
Tested Applications	ELISA, IHC, IF; Recommended dilution: IHC:1:20-1:200, IF:1:50-1:200
Form	Liquid
Conjugate	Non-conjugated
Storage Buffer	Preservative: 0.03% Proclin 300 Constituents: 50% Glycerol, 0.01M PBS, PH 7.4
Purification Method	>95%, Protein G purified
Isotype	IgG
Clonality	Polyclonal
Alias	Mitogen-activated protein kinase kinase kinase 8 (EC 2.7.11.25) (Cancer Osaka thyroid oncogene) (Proto-oncogene c-Cot) (Serine/threonine-protein kinase cot) (Tumor progression locus 2) (TPL-2), MAP3K8, COT ESTF
Immunogen Species	Homo sapiens (Human)
Research Area	Signal Transduction
Target Names	MAP3K8

Image


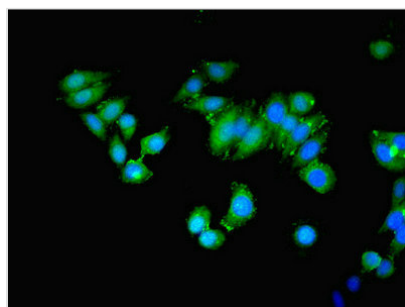
Immunohistochemistry of paraffin-embedded human brain tissue using CSB-PA013433LA01HU at dilution of 1:100



Immunohistochemistry of paraffin-embedded human glioma using CSB-PA013433LA01HU at dilution of 1:100



Immunofluorescent analysis of HeLa cells using CSB-PA013433LA01HU at dilution of 1:100 and Alexa Fluor 488-conjugated AffiniPure Goat Anti-Rabbit IgG(H+L)



Immunofluorescent analysis of HepG2 cells using CSB-PA013433LA01HU at dilution of 1:100 and Alexa Fluor 488-conjugated AffiniPure Goat Anti-Rabbit IgG(H+L)

Usage

For Research Use Only. Not for use in diagnostic or therapeutic procedures.