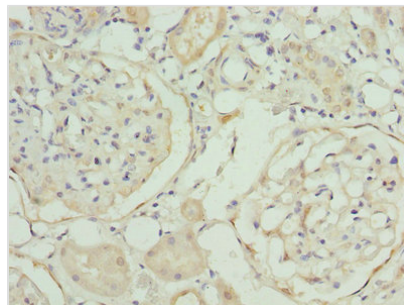


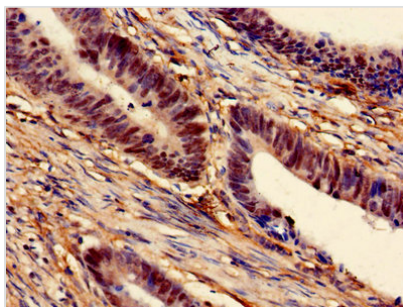


MAT2A Antibody

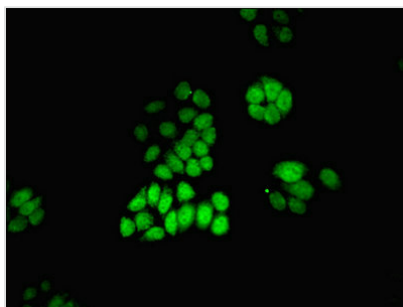
Product Code	CSB-PA013517LA01HU
Storage	Upon receipt, store at -20°C or -80°C. Avoid repeated freeze.
Uniprot No.	P31153
Immunogen	Recombinant Human S-adenosylmethionine synthase isoform type-2 protein (1-395AA)
Raised In	Rabbit
Species Reactivity	Human
Tested Applications	ELISA, IHC, IF; Recommended dilution: IHC:1:20-1:200, IF:1:50-1:200
Form	Liquid
Conjugate	Non-conjugated
Storage Buffer	Preservative: 0.03% Proclin 300 Constituents: 50% Glycerol, 0.01M PBS, PH 7.4
Purification Method	>95%, Protein G purified
Isotype	IgG
Clonality	Polyclonal
Alias	S-adenosylmethionine synthase isoform type-2 (AdoMet synthase 2) (EC 2.5.1.6) (Methionine adenosyltransferase 2) (MAT 2) (Methionine adenosyltransferase II) (MAT-II), MAT2A, AMS2 MATA2
Immunogen Species	Homo sapiens (Human)
Research Area	Signal Transduction
Target Names	MAT2A

Image


Immunohistochemistry of paraffin-embedded human kidney tissue using CSB-PA013517LA01HU at dilution of 1:100



Immunohistochemistry of paraffin-embedded human colon cancer using CSB-PA013517LA01HU at dilution of 1:100



Immunofluorescent analysis of PC-3 cells using CSB-PA013517LA01HU at dilution of 1:100 and Alexa Fluor 488-conjugated AffiniPure Goat Anti-Rabbit IgG(H+L)

Usage

For Research Use Only. Not for use in diagnostic or therapeutic procedures.