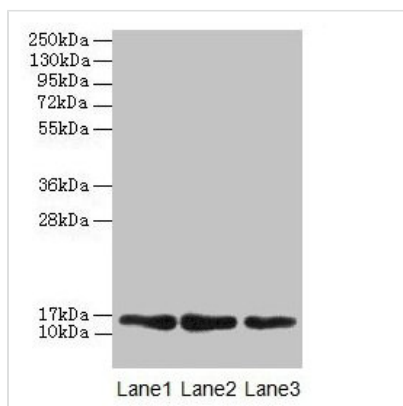




MRPL14 Antibody

Product Code	CSB-PA014819LA01HU
Storage	Upon receipt, store at -20°C or -80°C. Avoid repeated freeze.
Uniprot No.	Q6P1L8
Immunogen	Recombinant Human 39S ribosomal protein L14, mitochondrial protein (1-145AA)
Raised In	Rabbit
Species Reactivity	Human, Mouse
Tested Applications	ELISA, WB, IHC; Recommended dilution: WB:1:1000-1:5000, IHC:1:20-1:200
Form	Liquid
Conjugate	Non-conjugated
Storage Buffer	Preservative: 0.03% Proclin 300 Constituents: 50% Glycerol, 0.01M PBS, PH 7.4
Purification Method	>95%, Protein G purified
Isotype	IgG
Clonality	Polyclonal
Alias	39S ribosomal protein L14, mitochondrial (L14mt) (MRP-L14) (39S ribosomal protein L32, mitochondrial) (L32mt) (MRP-L32) (Mitochondrial large ribosomal subunit protein uL14m), MRPL14, MRPL32 RPML32
Immunogen Species	Homo sapiens (Human)
Research Area	Epigenetics and Nuclear Signaling
Target Names	MRPL14

Image



Western blot

All lanes: MRPL14 antibody at 2µg/ml

Lane 1: HeLa whole cell lysate

Lane 2: HepG2 whole cell lysate

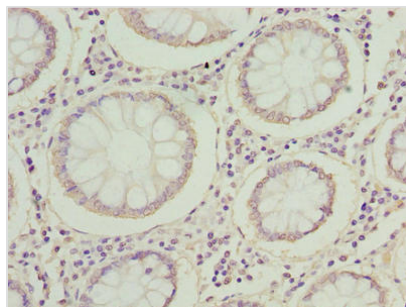
Lane 3: Mouse liver tissue

Secondary

Goat polyclonal to rabbit IgG at 1/10000 dilution

Predicted band size: 16 kDa

Observed band size: 16 kDa



Immunohistochemistry of paraffin-embedded human colon cancer using CSB-PA014819LA01HU at dilution of 1:100

Usage

For Research Use Only. Not for use in diagnostic or therapeutic procedures.