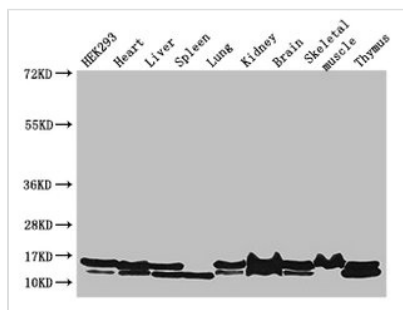




NDUFB6 Antibody

Product Code	CSB-PA015653LA01HU
Storage	Upon receipt, store at -20°C or -80°C. Avoid repeated freeze.
Uniprot No.	O95139
Immunogen	Recombinant Human NADH dehydrogenase [ubiquinone] 1 beta subcomplex subunit 6 protein (2-67AA)
Raised In	Rabbit
Species Reactivity	Human, Mouse
Tested Applications	ELISA, WB, IHC, IP; Recommended dilution: WB:1:500-1:5000, IHC:1:20-1:200, IP:1:200-1:2000
Form	Liquid
Conjugate	Non-conjugated
Storage Buffer	Preservative: 0.03% Proclin 300 Constituents: 50% Glycerol, 0.01M PBS, PH 7.4
Purification Method	>95%, Protein G purified
Isotype	IgG
Clonality	Polyclonal
Alias	NADH dehydrogenase [ubiquinone] 1 beta subcomplex subunit 6 (Complex I-B17) (CI-B17) (NADH-ubiquinone oxidoreductase B17 subunit), NDUFB6
Immunogen Species	Homo sapiens (Human)
Research Area	Signal Transduction
Target Names	NDUFB6

Image



Western Blot

Positive WB detected in: HEK293 whole cell lysate, Mouse heart tissue, Mouse liver tissue, Mouse spleen tissue, Mouse lung tissue, Mouse kidney tissue, Mouse brain tissue, Mouse skeletal muscle tissue, Mouse thymus tissue

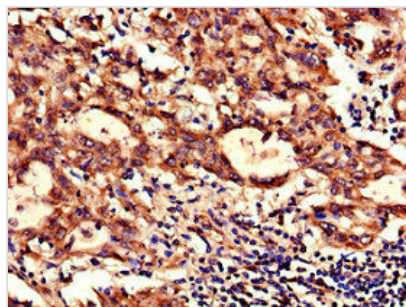
All lanes: NDUFB6 antibody at 3µg/ml

Secondary

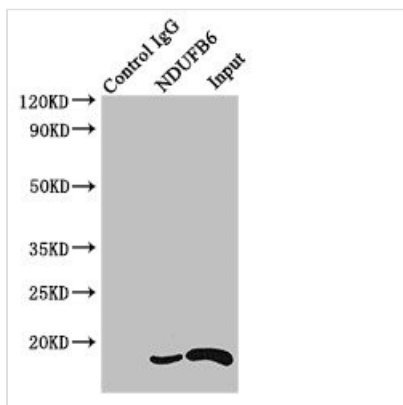
Goat polyclonal to rabbit IgG at 1/50000 dilution

Predicted band size: 16, 14 kDa

Observed band size: 16, 14 kDa



Immunohistochemistry of paraffin-embedded human lung cancer using CSB-PA015653LA01HU at dilution of 1:100



Immunoprecipitating NDUFB6 in HEK293 whole cell lysate

Lane 1: Rabbit control IgG instead of (1µg) instead of CSB-PA015653LA01HU in HEK293 whole cell lysate. For western blotting, a HRP-conjugated Protein G antibody was used as the secondary antibody (1/2000)

Lane 2: CSB-PA015653LA01HU (4µg) + HEK293 whole cell lysate (500µg)

Lane 3: HEK293 whole cell lysate (20µg)

Usage

For Research Use Only. Not for use in diagnostic or therapeutic procedures.