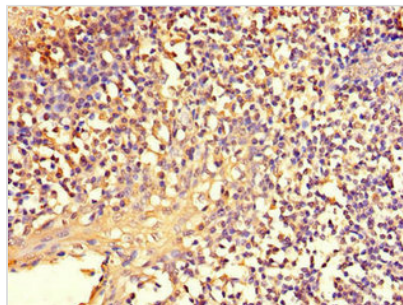




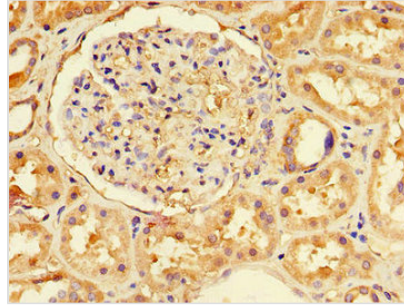
NFE2L1 Antibody

Product Code	CSB-PA015751LA01HU
Storage	Upon receipt, store at -20°C or -80°C. Avoid repeated freeze.
Uniprot No.	Q14494
Immunogen	Recombinant Human Endoplasmic reticulum membrane sensor NFE2L1 protein (251-550AA)
Raised In	Rabbit
Species Reactivity	Human
Tested Applications	ELISA, IHC, IF; Recommended dilution: IHC:1:20-1:200, IF:1:50-1:200
Form	Liquid
Conjugate	Non-conjugated
Storage Buffer	Preservative: 0.03% Proclin 300 Constituents: 50% Glycerol, 0.01M PBS, PH 7.4
Purification Method	>95%, Protein G purified
Isotype	IgG
Clonality	Polyclonal
Alias	Endoplasmic reticulum membrane sensor NFE2L1 (Locus control region-factor 1) (LCR-F1) (Nuclear factor erythroid 2-related factor 1) (NF-E2-related factor 1) (NFE2-related factor 1) (Nuclear factor, erythroid derived 2, like 1) (Protein NRF1, p120 form) (Transcription factor 11) (TCF-11) [Cleaved into: Transcription factor NRF1 (Protein NRF1, p110 form)], NFE2L1, HBZ17 NRF1 TCF11
Immunogen Species	Homo sapiens (Human)
Research Area	Epigenetics and Nuclear Signaling
Target Names	NFE2L1

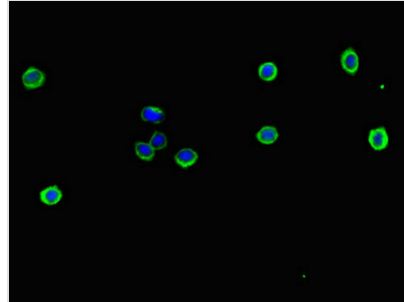
Image



Immunohistochemistry of paraffin-embedded human tonsil tissue using CSB-PA015751LA01HU at dilution of 1:100



Immunohistochemistry of paraffin-embedded human kidney tissue using CSB-PA015751LA01HU at dilution of 1:100



Immunofluorescent analysis of HepG2 cells using CSB-PA015751LA01HU at dilution of 1:100 and Alexa Fluor 488-conjugated AffiniPure Goat Anti-Rabbit IgG(H+L)

Usage

For Research Use Only. Not for use in diagnostic or therapeutic procedures.