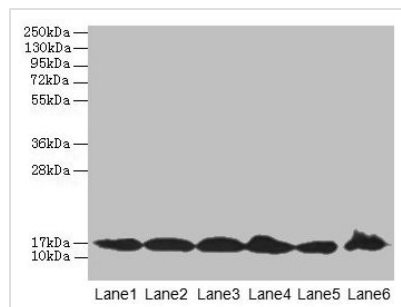




# BUD31 Antibody

<b>Product Code</b>	CSB-PA01749A0Rb
<b>Storage</b>	Upon receipt, store at -20°C or -80°C. Avoid repeated freeze.
<b>Uniprot No.</b>	P41223
<b>Immunogen</b>	Recombinant Human Protein BUD31 homolog protein (1-144AA)
<b>Raised In</b>	Rabbit
<b>Species Reactivity</b>	Human, Mouse
<b>Tested Applications</b>	ELISA, WB, IHC, IF; Recommended dilution: WB:1:500-1:2000, IHC:1:20-1:200, IF:1:50-1:200
<b>Form</b>	Liquid
<b>Conjugate</b>	Non-conjugated
<b>Storage Buffer</b>	Preservative: 0.03% Proclin 300 Constituents: 50% Glycerol, 0.01M PBS, PH 7.4
<b>Purification Method</b>	>95%, Protein G purified
<b>Isotype</b>	IgG
<b>Clonality</b>	Polyclonal
<b>Alias</b>	Protein BUD31 homolog (Protein EDG-2) (Protein G10 homolog), BUD31, EDG2
<b>Immunogen Species</b>	Homo sapiens (Human)
<b>Research Area</b>	Epigenetics and Nuclear Signaling
<b>Target Names</b>	BUD31

## Image



### Western blot

All lanes: BUD31 antibody at 5µg/ml

Lane 1: Jurkat whole cell lysate

Lane 2: Raji whole cell lysate

Lane 3: NIH/3T3 whole cell lysate

Lane 4: K562 whole cell lysate

Lane 5: HepG2 whole cell lysate

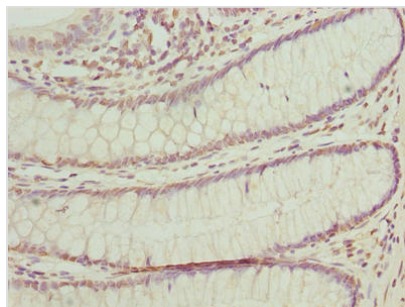
Lane 6: U251 whole cell lysate

Secondary

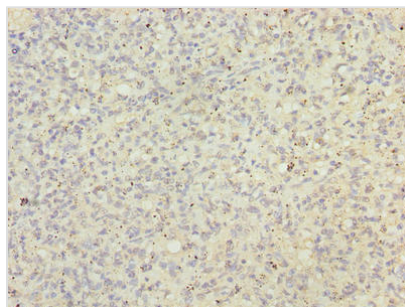
Goat polyclonal to rabbit IgG at 1/10000 dilution

Predicted band size: 17, 18 kDa

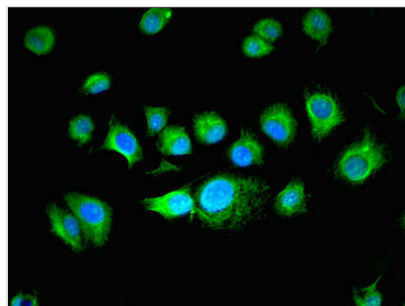
Observed band size: 17 kDa



Immunohistochemistry of paraffin-embedded human colon cancer using CSB-PA01749A0Rb at dilution of 1:100



Immunohistochemistry of paraffin-embedded human spleen tissue using CSB-PA01749A0Rb at dilution of 1:100



Immunofluorescent analysis of MCF-7 cells using CSB-PA01749A0Rb at dilution of 1:100 and Alexa Fluor 488-conjugated AffiniPure Goat Anti-Rabbit IgG(H+L)