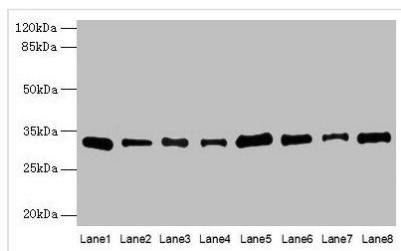




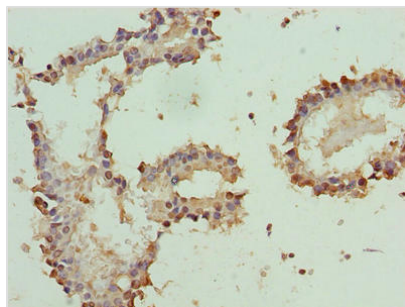
PLP1 Antibody

Product Code	CSB-PA018202LA01HU
Storage	Upon receipt, store at -20°C or -80°C. Avoid repeated freeze.
Uniprot No.	P60201
Immunogen	Recombinant Human Myelin proteolipid protein (143-197AA)
Raised In	Rabbit
Species Reactivity	Human
Tested Applications	ELISA, WB, IHC, IF; Recommended dilution: WB:1:500-1:2000, IHC:1:20-1:200, IF:1:50-1:200
Form	Liquid
Conjugate	Non-conjugated
Storage Buffer	Preservative: 0.03% Proclin 300 Constituents: 50% Glycerol, 0.01M PBS, PH 7.4
Purification Method	>95%, Protein G purified
Isotype	IgG
Clonality	Polyclonal
Alias	Myelin proteolipid protein (PLP) (Lipophilin), PLP1, PLP
Immunogen Species	Homo sapiens (Human)
Research Area	Others
Target Names	PLP1

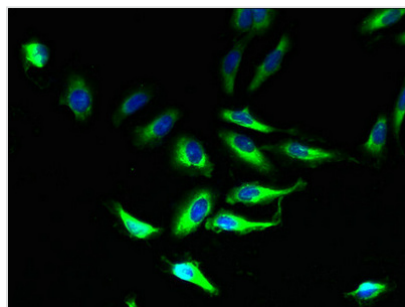
Image



Western blot
 All lanes: PLP1 antibody at 4µg/ml
 Lane 1: Hela whole cell lysate
 Lane 2: HL60 whole cell lysate
 Lane 3: K562 whole cell lysate
 Lane 4: THP-1 whole cell lysate
 Lane 5: U937 whole cell lysate
 Lane 6: A549 whole cell lysate
 Lane 7: Caco-2 whole cell lysate
 Lane 8: HepG2 whole cell lysate
 Secondary
 Goat polyclonal to rabbit IgG at 1/10000 dilution
 Predicted band size: 31, 27 kDa
 Observed band size: 31 kDa



Immunohistochemistry of paraffin-embedded human breast cancer using CSB-PA018202LA01HU at dilution of 1:100



Immunofluorescent analysis of HeLa cells using CSB-PA018202LA01HU at dilution of 1:100 and Alexa Fluor 488-conjugated AffiniPure Goat Anti-Rabbit IgG(H+L)

Usage

For Research Use Only. Not for use in diagnostic or therapeutic procedures.