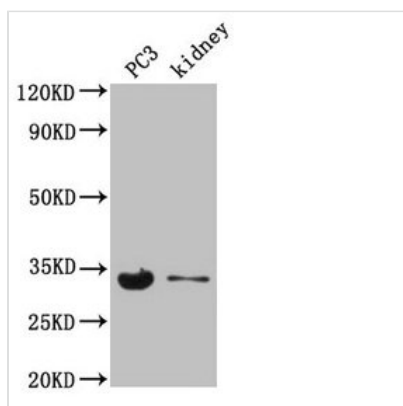




POLR2C Antibody

Product Code	CSB-PA018329LA01HU
Storage	Upon receipt, store at -20°C or -80°C. Avoid repeated freeze.
Uniprot No.	P19387
Immunogen	Recombinant Human DNA-directed RNA polymerase II subunit RPB3 protein (2-275AA)
Raised In	Rabbit
Species Reactivity	Human, Mouse
Tested Applications	ELISA, WB, IHC; Recommended dilution: WB:1:500-1:5000, IHC:1:20-1:200
Form	Liquid
Conjugate	Non-conjugated
Storage Buffer	Preservative: 0.03% Proclin 300 Constituents: 50% Glycerol, 0.01M PBS, PH 7.4
Purification Method	>95%, Protein G purified
Isotype	IgG
Clonality	Polyclonal
Alias	DNA-directed RNA polymerase II subunit RPB3 (RNA polymerase II subunit 3) (RNA polymerase II subunit B3) (DNA-directed RNA polymerase II 33 kDa polypeptide) (RPB33) (DNA-directed RNA polymerase II subunit C) (RPB31), POLR2C
Immunogen Species	Homo sapiens (Human)
Research Area	Epigenetics and Nuclear Signaling
Target Names	POLR2C

Image



Western Blot

Positive WB detected in: PC-3 whole cell lysate, Mouse kidney tissue

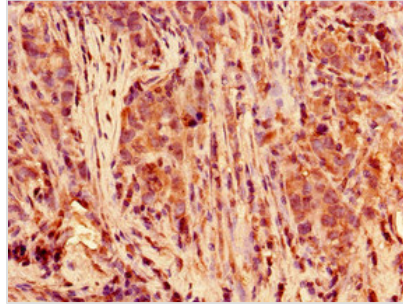
All lanes: POLR2C antibody at 3.5µg/ml

Secondary

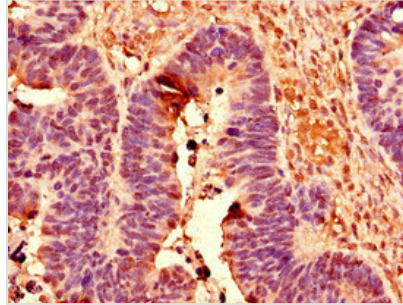
Goat polyclonal to rabbit IgG at 1/50000 dilution

Predicted band size: 32 kDa

Observed band size: 32 kDa



Immunohistochemistry of paraffin-embedded human pancreatic cancer using CSB-PA018329LA01HU at dilution of 1:100



Immunohistochemistry of paraffin-embedded human ovarian cancer using CSB-PA018329LA01HU at dilution of 1:100

Usage

For Research Use Only. Not for use in diagnostic or therapeutic procedures.