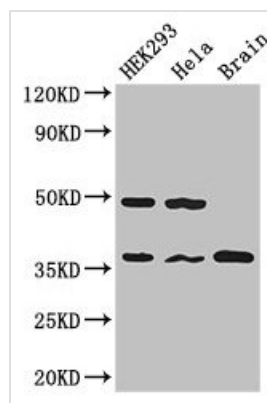




PPP1CC Antibody

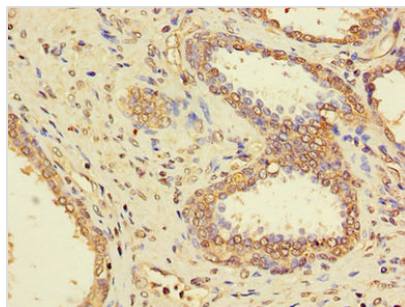
Product Code	CSB-PA018505LA01HU
Storage	Upon receipt, store at -20°C or -80°C. Avoid repeated freeze.
Uniprot No.	P36873
Immunogen	Recombinant Human Serine/threonine-protein phosphatase PP1-gamma catalytic subunit protein (151-323AA)
Raised In	Rabbit
Species Reactivity	Human, Mouse
Tested Applications	ELISA, WB, IHC; Recommended dilution: WB:1:2000-1:5000, IHC:1:20-1:200
Form	Liquid
Conjugate	Non-conjugated
Storage Buffer	Preservative: 0.03% Proclin 300 Constituents: 50% Glycerol, 0.01M PBS, PH 7.4
Purification Method	>95%, Protein G purified
Isotype	IgG
Clonality	Polyclonal
Alias	Serine/threonine-protein phosphatase PP1-gamma catalytic subunit (PP-1G) (EC 3.1.3.16) (Protein phosphatase 1C catalytic subunit), PPP1CC
Immunogen Species	Homo sapiens (Human)
Research Area	Cell Biology
Target Names	PPP1CC

Image

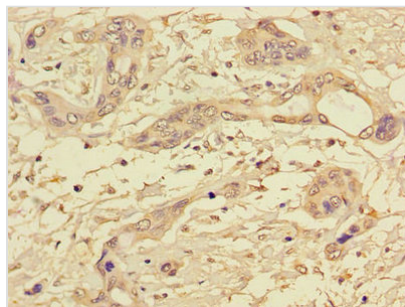


Western Blot

Positive WB detected in: HEK293 whole cell lysate, HeLa whole cell lysate, Mouse brain tissue
All lanes: PPP1CC antibody at 2.7µg/ml
Secondary
Goat polyclonal to rabbit IgG at 1/50000 dilution
Predicted band size: 37, 39 kDa
Observed band size: 37 kDa



Immunohistochemistry of paraffin-embedded human prostate cancer using CSB-PA018505LA01HU at dilution of 1:100



Immunohistochemistry of paraffin-embedded human pancreatic cancer using CSB-PA018505LA01HU at dilution of 1:100