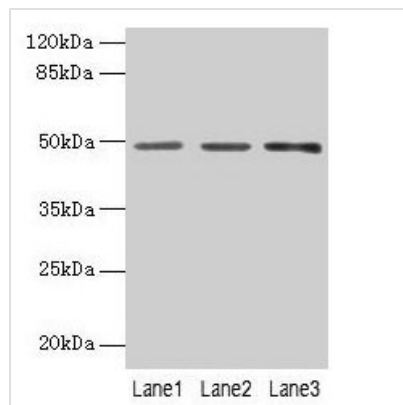




PSG6 Antibody

Product Code	CSB-PA018856LA01HU
Storage	Upon receipt, store at -20°C or -80°C. Avoid repeated freeze.
Uniprot No.	Q00889
Immunogen	Recombinant Human Pregnancy-specific beta-1-glycoprotein 6 protein (35-300AA)
Raised In	Rabbit
Species Reactivity	Human
Tested Applications	ELISA, WB; Recommended dilution: WB:1:1000-1:5000
Form	Liquid
Conjugate	Non-conjugated
Storage Buffer	Preservative: 0.03% Proclin 300 Constituents: 50% Glycerol, 0.01M PBS, PH 7.4
Purification Method	>95%, Protein G purified
Isotype	IgG
Clonality	Polyclonal
Alias	Pregnancy-specific beta-1-glycoprotein 6 (PS-beta-G-6) (PSBG-6) (Pregnancy-specific glycoprotein 6) (Pregnancy-specific beta-1-glycoprotein 10) (PS-beta-G-10) (PSBG-10) (Pregnancy-specific glycoprotein 10) (Pregnancy-specific beta-1-glycoprotein 12) (PS-beta-G-12) (PSBG-12) (Pregnancy-specific glycoprotein 12), PSG6, CGM3 PSG10 PSG12 PSGGB
Immunogen Species	Homo sapiens (Human)
Research Area	Tags & Cell Markers
Target Names	PSG6

Image



Western blot

All lanes: PSG6 antibody at 6µg/ml

Lane 1: HepG2 whole cell lysate

Lane 2: 293T whole cell lysate

Lane 3: MCF-7 whole cell lysate

Secondary

Goat polyclonal to rabbit IgG at 1/10000 dilution

Predicted band size: 49, 48 kDa

Observed band size: 49 kDa

Usage

For Research Use Only. Not for use in diagnostic or therapeutic procedures.