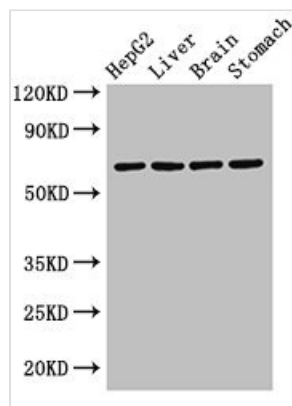




RCBTB2 Antibody

Product Code	CSB-PA019504LA01HU
Storage	Upon receipt, store at -20°C or -80°C. Avoid repeated freeze.
Uniprot No.	O95199
Immunogen	Recombinant Human RCC1 and BTB domain-containing protein 2 protein (1-200AA)
Raised In	Rabbit
Species Reactivity	Human, Rat
Tested Applications	ELISA, WB, IHC, IF; Recommended dilution: WB:1:500-1:5000, IHC:1:20-1:200, IF:1:50-1:200
Form	Liquid
Conjugate	Non-conjugated
Storage Buffer	Preservative: 0.03% Proclin 300 Constituents: 50% Glycerol, 0.01M PBS, PH 7.4
Purification Method	>95%, Protein G purified
Isotype	IgG
Clonality	Polyclonal
Alias	RCC1 and BTB domain-containing protein 2 (Chromosome condensation 1-like) (CHC1-L) (RCC1-like G exchanging factor) (Regulator of chromosome condensation and BTB domain-containing protein 2), RCBTB2, CHC1L RLG
Immunogen Species	Homo sapiens (Human)
Research Area	Signal Transduction
Target Names	RCBTB2

Image



Western Blot

Positive WB detected in: HepG2 whole cell lysate, Rat liver tissue, Rat brain tissue, Rat stomach tissue

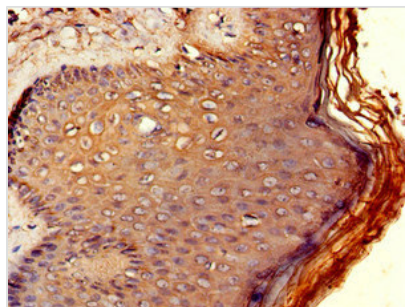
All lanes: RCBTB2 antibody at 3.2µg/ml

Secondary

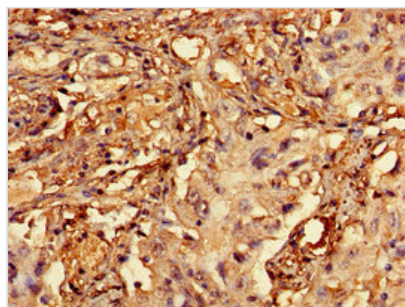
Goat polyclonal to rabbit IgG at 1/50000 dilution

Predicted band size: 61, 58 kDa

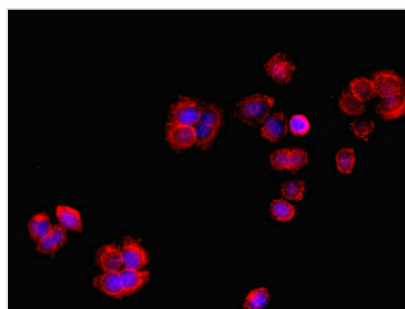
Observed band size: 61 kDa



Immunohistochemistry of paraffin-embedded human skin tissue using CSB-PA019504LA01HU at dilution of 1:100



Immunohistochemistry of paraffin-embedded human lung cancer using CSB-PA019504LA01HU at dilution of 1:100



Immunofluorescent analysis of PC-3 cells using CSB-PA019504LA01HU at dilution of 1:100 and Cy3-conjugated Goat Anti-Rabbit IgG