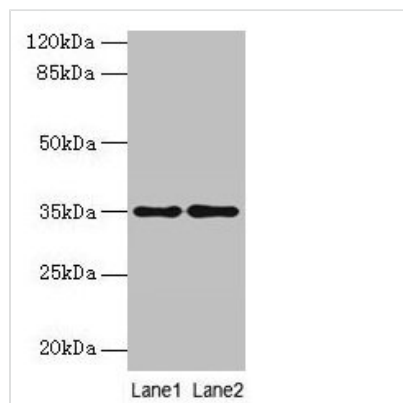




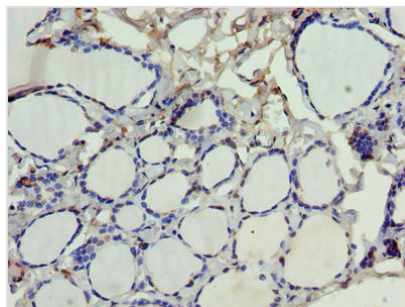
# SDSL Antibody

<b>Product Code</b>	CSB-PA020927LA01HU
<b>Storage</b>	Upon receipt, store at -20°C or -80°C. Avoid repeated freeze.
<b>Uniprot No.</b>	Q96GA7
<b>Immunogen</b>	Recombinant Human Serine dehydratase-like protein (39-169AA)
<b>Raised In</b>	Rabbit
<b>Species Reactivity</b>	Human, Mouse
<b>Tested Applications</b>	ELISA, WB, IHC; Recommended dilution: WB:1:1000-1:5000, IHC:1:20-1:200
<b>Form</b>	Liquid
<b>Conjugate</b>	Non-conjugated
<b>Storage Buffer</b>	Preservative: 0.03% Proclin 300 Constituents: 50% Glycerol, 0.01M PBS, PH 7.4
<b>Purification Method</b>	>95%, Protein G purified
<b>Isotype</b>	IgG
<b>Clonality</b>	Polyclonal
<b>Alias</b>	Serine dehydratase-like (L-serine deaminase) (L-serine dehydratase/L-threonine deaminase) (L-threonine dehydratase) (TDH) (EC 4.3.1.19) (Serine dehydratase 2) (SDH 2) (EC 4.3.1.17), SDSL
<b>Immunogen Species</b>	Homo sapiens (Human)
<b>Research Area</b>	Signal Transduction
<b>Target Names</b>	SDSL

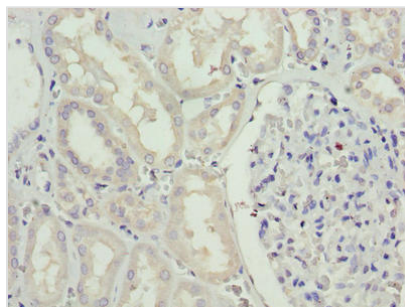
## Image



Western blot  
 All lanes: SDSL antibody at 4µg/ml  
 Lane 1: HepG2 whole cell lysate  
 Lane 2: Mouse liver tissue  
 Secondary  
 Goat polyclonal to rabbit IgG at 1/10000 dilution  
 Predicted band size: 35 kDa  
 Observed band size: 35 kDa



Immunohistochemistry of paraffin-embedded human thyroid tissue using CSB-PA020927LA01HU at dilution of 1:100



Immunohistochemistry of paraffin-embedded human kidney tissue using CSB-PA020927LA01HU at dilution of 1:100

## Usage

For Research Use Only. Not for use in diagnostic or therapeutic procedures.