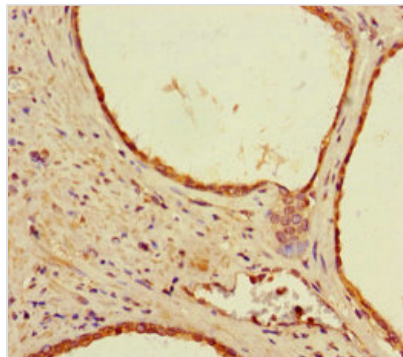




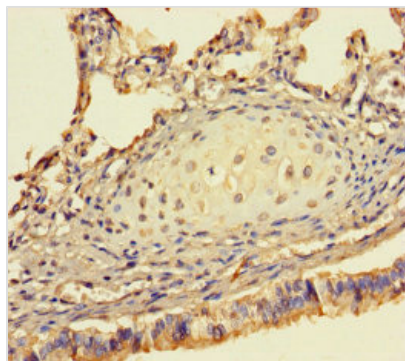
SEM1 Antibody

Product Code	CSB-PA021263LA01HU
Storage	Upon receipt, store at -20°C or -80°C. Avoid repeated freeze.
Uniprot No.	P60896
Immunogen	Recombinant Human 26S proteasome complex subunit SEM1 protein (1-70AA)
Raised In	Rabbit
Species Reactivity	Human
Tested Applications	ELISA, IHC; Recommended dilution: IHC:1:20-1:200
Form	Liquid
Conjugate	Non-conjugated
Storage Buffer	Preservative: 0.03% Proclin 300 Constituents: 50% Glycerol, 0.01M PBS, PH 7.4
Purification Method	>95%, Protein G purified
Isotype	IgG
Clonality	Polyclonal
Alias	26S proteasome complex subunit SEM1 (26S proteasome complex subunit DSS1) (Deleted in split hand/split foot protein 1) (Split hand/foot deleted protein 1) (Split hand/foot malformation type 1 protein), SEM1, C7orf76 DSS1 SHFDG1 SHFM1
Immunogen Species	Homo sapiens (Human)
Research Area	Cell Biology
Target Names	SEM1

Image



Immunohistochemistry of paraffin-embedded human prostate cancer using CSB-PA021263LA01HU at dilution of 1:100



Immunohistochemistry of paraffin-embedded human lung tissue using CSB-PA021263LA01HU at dilution of 1:100

Usage

For Research Use Only. Not for use in diagnostic or therapeutic procedures.