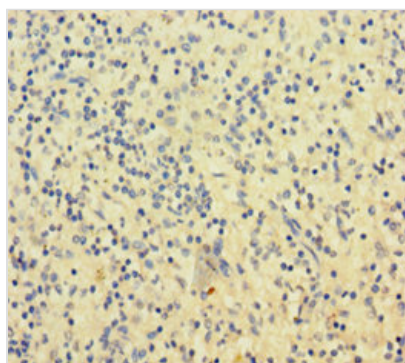




SLAMF8 Antibody

Product Code	CSB-PA021370LA01HU
Storage	Upon receipt, store at -20°C or -80°C. Avoid repeated freeze.
Uniprot No.	Q9P0V8
Immunogen	Recombinant Human SLAM family member 8 protein (23-233AA)
Raised In	Rabbit
Species Reactivity	Human
Tested Applications	ELISA, IHC; Recommended dilution: IHC:1:20-1:200
Form	Liquid
Conjugate	Non-conjugated
Storage Buffer	Preservative: 0.03% Proclin 300 Constituents: 50% Glycerol, 0.01M PBS, PH 7.4
Purification Method	>95%, Protein G purified
Isotype	IgG
Clonality	Polyclonal
Alias	SLAM family member 8 (B-lymphocyte activator macrophage expressed) (BCM-like membrane protein) (CD antigen CD353), SLAMF8, BLAME
Immunogen Species	Homo sapiens (Human)
Research Area	Immunology
Target Names	SLAMF8

Image



Immunohistochemistry of paraffin-embedded human spleen tissue using CSB-PA021370LA01HU at dilution of 1:100

Usage

For Research Use Only. Not for use in diagnostic or therapeutic procedures.