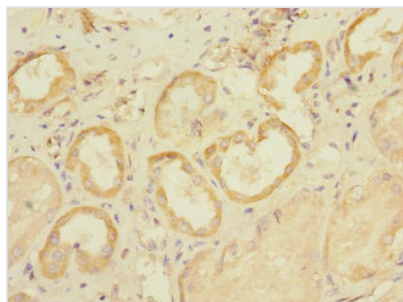




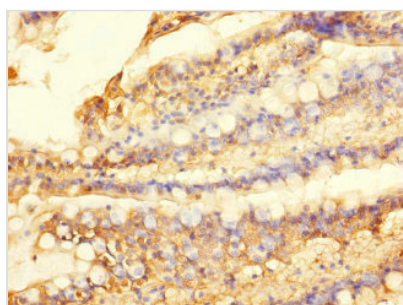
SLC28A1 Antibody

Product Code	CSB-PA021539LA01HU
Storage	Upon receipt, store at -20°C or -80°C. Avoid repeated freeze.
Uniprot No.	O00337
Immunogen	Recombinant Human Sodium/nucleoside cotransporter 1 protein (1-80AA)
Raised In	Rabbit
Species Reactivity	Human
Tested Applications	ELISA, IHC, IF; Recommended dilution: IHC:1:20-1:200, IF:1:50-1:200
Form	Liquid
Conjugate	Non-conjugated
Storage Buffer	Preservative: 0.03% Proclin 300 Constituents: 50% Glycerol, 0.01M PBS, PH 7.4
Purification Method	>95%, Protein G purified
Isotype	IgG
Clonality	Polyclonal
Alias	Sodium/nucleoside cotransporter 1 (Concentrative nucleoside transporter 1) (CNT 1) (hCNT1) (Na(+)/nucleoside cotransporter 1) (Sodium-coupled nucleoside transporter 1) (Solute carrier family 28 member 1), SLC28A1, CNT1
Immunogen Species	Homo sapiens (Human)
Research Area	Others
Target Names	SLC28A1

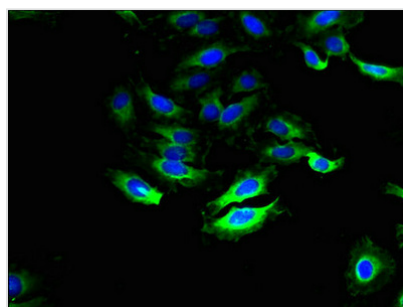
Image



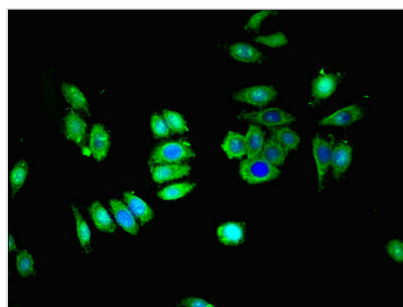
Immunohistochemistry of paraffin-embedded human kidney tissue using CSB-PA021539LA01HU at dilution of 1:100



Immunohistochemistry of paraffin-embedded human small intestine tissue using CSB-PA021539LA01HU at dilution of 1:100



Immunofluorescent analysis of HeLa cells using CSB-PA021539LA01HU at dilution of 1:100 and Alexa Fluor 488-conjugated AffiniPure Goat Anti-Rabbit IgG(H+L)



Immunofluorescent analysis of HepG2 cells using CSB-PA021539LA01HU at dilution of 1:100 and Alexa Fluor 488-conjugated AffiniPure Goat Anti-Rabbit IgG(H+L)

Usage

For Research Use Only. Not for use in diagnostic or therapeutic procedures.