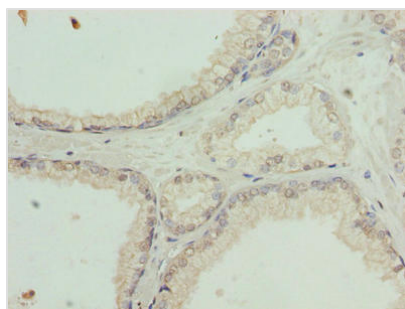




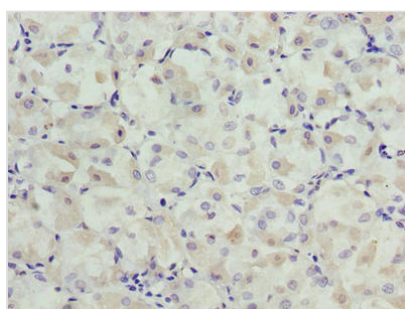
SLC31A2 Antibody

| | |
|----------------------------|---|
| Product Code | CSB-PA021577LA01HU |
| Storage | Upon receipt, store at -20°C or -80°C. Avoid repeated freeze. |
| Uniprot No. | O15432 |
| Immunogen | Recombinant Human Probable low affinity copper uptake protein 2 protein (44-93AA) |
| Raised In | Rabbit |
| Species Reactivity | Human |
| Tested Applications | ELISA, IHC, IF; Recommended dilution: IHC:1:20-1:200, IF:1:50-1:200 |
| Form | Liquid |
| Conjugate | Non-conjugated |
| Storage Buffer | Preservative: 0.03% Proclin 300 Constituents: 50% Glycerol, 0.01M PBS, PH 7.4 |
| Purification Method | Antigen Affinity Purified |
| Isotype | IgG |
| Clonality | Polyclonal |
| Alias | Probable low affinity copper uptake protein 2 (Copper transporter 2) (hCTR2) (Solute carrier family 31 member 2), SLC31A2, COPT2 CTR2 |
| Immunogen Species | Homo sapiens (Human) |
| Research Area | Signal Transduction |
| Target Names | SLC31A2 |

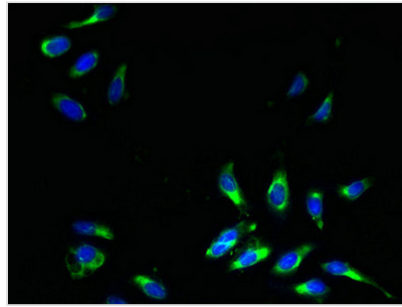
Image



Immunohistochemistry of paraffin-embedded human prostate cancer using CSB-PA021577LA01HU at dilution of 1:100



Immunohistochemistry of paraffin-embedded human gastric cancer using CSB-PA021577LA01HU at dilution of 1:100



Immunofluorescent analysis of HeLa cells using CSB-PA021577LA01HU at dilution of 1:100 and Alexa Fluor 488-conjugated AffiniPure Goat Anti-Rabbit IgG(H+L)

Usage

For Research Use Only. Not for use in diagnostic or therapeutic procedures.