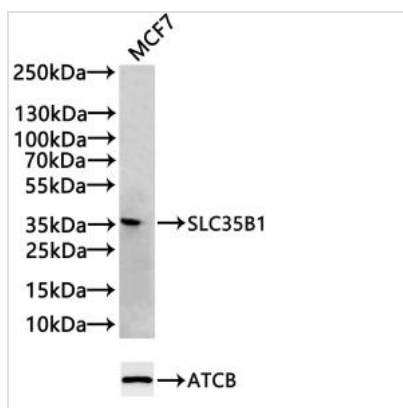




SLC35B1 Antibody

Product Code	CSB-PA021588LA01HU
Storage	Upon receipt, store at -20°C or -80°C. Avoid repeated freeze.
Uniprot No.	P78383
Immunogen	Recombinant Human Solute carrier family 35 member B1 protein (106-135AA)
Raised In	Rabbit
Species Reactivity	Human
Tested Applications	ELISA, WB; Recommended dilution: WB:1:500-1:1000
Form	Liquid
Conjugate	Non-conjugated
Storage Buffer	Preservative: 0.03% Proclin 300 Constituents: 50% Glycerol, 0.01M PBS, PH 7.4
Purification Method	>95%, Protein G purified
Isotype	IgG
Clonality	Polyclonal
Product Type	Polyclonal Antibody
Immunogen Species	Homo sapiens (Human)
Research Area	Signal Transduction
Target Names	SLC35B1

Image



Western Blot

Positive WB detected in: MCF7 whole cell lysate(20µg)

All lanes: SLC35B1 antibody at 1:1000

Secondary

Goat polyclonal to rabbit IgG at 1/20000 dilution

Predicted band size: 36, 40 kDa

Observed band size: 36 kDa

Exposure time: 120s

Usage

For Research Use Only. Not for use in diagnostic or therapeutic procedures.