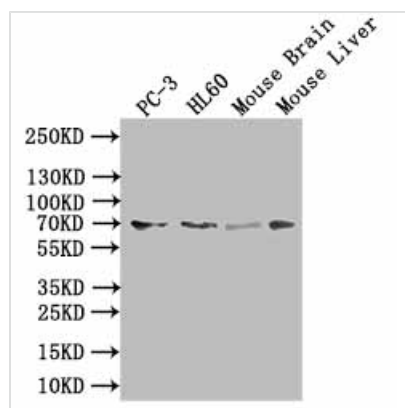




SLC6A6 Antibody

Product Code	CSB-PA021704LA01HU
Storage	Upon receipt, store at -20°C or -80°C. Avoid repeated freeze.
Uniprot No.	P31641
Immunogen	Recombinant Human Sodium- and chloride-dependent taurine transporter protein (1-49AA)
Raised In	Rabbit
Species Reactivity	Human, Mouse
Tested Applications	ELISA, WB, IF; Recommended dilution: WB:1:500-1:2000, IF:1:20-1:200
Form	Liquid
Conjugate	Non-conjugated
Storage Buffer	PBS with 0.01% thimerosal,50% glycerol,pH7.3.
Purification Method	Antigen Affinity Purified
Isotype	IgG
Clonality	Polyclonal
Product Type	Polyclonal Antibody
Immunogen Species	Homo sapiens (Human)
Research Area	Others
Target Names	SLC6A6

Image



Western Blot

Positive WB detected in: PC-3 whole cell lysate, HL60 whole cell lysate, Mouse Brain tissue lysate, Mouse Liver tissue lysate

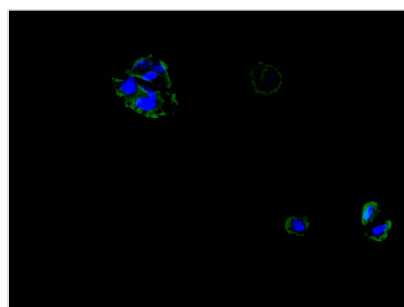
All lanes: SLC6A6 antibody at 1:1000

Secondary

Goat polyclonal to rabbit IgG at 1/50000 dilution

Predicted band size: 70 kDa

Observed band size: 70 kDa



Immunofluorescent analysis of MCF7 cells using CSB-PA021704LA01HU at dilution of 1:25 and Alexa Fluor 488-conjugated AffiniPure Goat Anti-Rabbit IgG(H+L)



Usage

For Research Use Only. Not for use in diagnostic or therapeutic procedures.