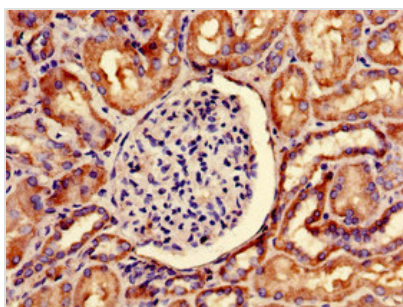




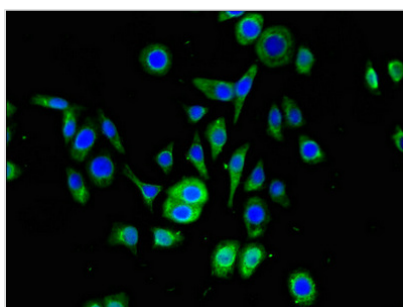
SNRPD1 Antibody

| | |
|----------------------------|--|
| Product Code | CSB-PA022332LA01HU |
| Storage | Upon receipt, store at -20°C or -80°C. Avoid repeated freeze. |
| Uniprot No. | P62314 |
| Immunogen | Recombinant Human Small nuclear ribonucleoprotein Sm D1 protein (1-119AA) |
| Raised In | Rabbit |
| Species Reactivity | Human |
| Tested Applications | ELISA, WB, IHC, IF; Recommended dilution: WB:1:500-1:5000, IHC:1:20-1:200, IF:1:50-1:200 |
| Form | Liquid |
| Conjugate | Non-conjugated |
| Storage Buffer | Preservative: 0.03% Proclin 300 Constituents: 50% Glycerol, 0.01M PBS, PH 7.4 |
| Purification Method | >95%, Protein G purified |
| Isotype | IgG |
| Clonality | Polyclonal |
| Alias | Small nuclear ribonucleoprotein Sm D1 (Sm-D1) (Sm-D autoantigen) (snRNP core protein D1), SNRPD1 |
| Immunogen Species | Homo sapiens (Human) |
| Research Area | Immunology |
| Target Names | SNRPD1 |

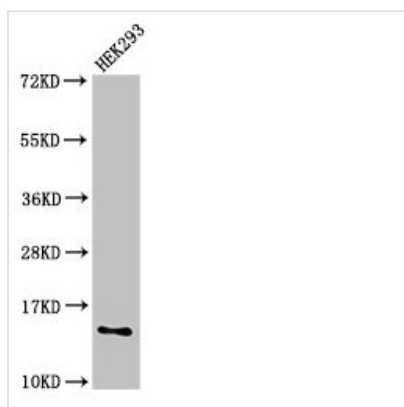
Image



Immunohistochemistry of paraffin-embedded human kidney tissue using CSB-PA022332LA01HU at dilution of 1:100



Immunofluorescent analysis of PC-3 cells using CSB-PA022332LA01HU at dilution of 1:100 and Alexa Fluor 488-conjugated AffiniPure Goat Anti-Rabbit IgG(H+L)

**Western Blot**

Positive WB detected in: HEK293 whole cell lysate

All lanes: SNRPD1 antibody at 2.4µg/ml

Secondary

Goat polyclonal to rabbit IgG at 1/50000 dilution

Predicted band size: 14 kDa

Observed band size: 14 kDa

Usage

For Research Use Only. Not for use in diagnostic or therapeutic procedures.