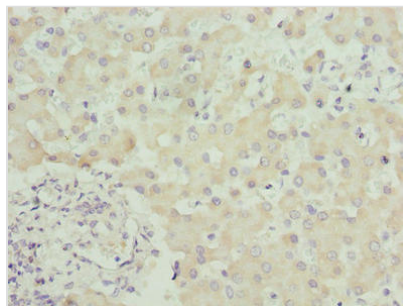




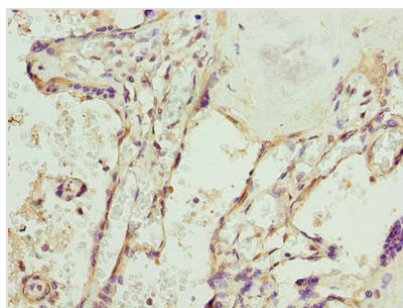
# SPCS3 Antibody

<b>Product Code</b>	CSB-PA022517LA01HU
<b>Storage</b>	Upon receipt, store at -20°C or -80°C. Avoid repeated freeze.
<b>Uniprot No.</b>	P61009
<b>Immunogen</b>	Recombinant Human Signal peptidase complex subunit 3 protein (33-180AA)
<b>Raised In</b>	Rabbit
<b>Species Reactivity</b>	Human, Mouse
<b>Tested Applications</b>	ELISA, WB, IHC; Recommended dilution: WB:1:500-1:2000, IHC:1:20-1:200
<b>Form</b>	Liquid
<b>Conjugate</b>	Non-conjugated
<b>Storage Buffer</b>	Preservative: 0.03% Proclin 300 Constituents: 50% Glycerol, 0.01M PBS, PH 7.4
<b>Purification Method</b>	Antigen Affinity Purified
<b>Isotype</b>	IgG
<b>Clonality</b>	Polyclonal
<b>Alias</b>	Signal peptidase complex subunit 3 (EC 3.4.-.-) (Microsomal signal peptidase 22/23 kDa subunit) (SPC22/23) (SPase 22/23 kDa subunit), SPCS3, SPC22
<b>Immunogen Species</b>	Homo sapiens (Human)
<b>Research Area</b>	Epigenetics and Nuclear Signaling
<b>Target Names</b>	SPCS3

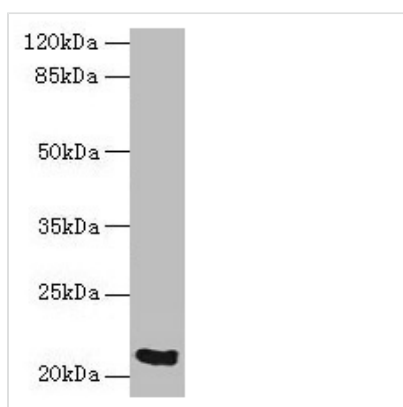
## Image



Immunohistochemistry of paraffin-embedded human liver tissue using CSB-PA022517LA01HU at dilution of 1:100



Immunohistochemistry of paraffin-embedded human placenta tissue using CSB-PA022517LA01HU at dilution of 1:100



Western blot

All lanes: SPCS3 antibody at 0.1µg/ml + Mouse kidney tissue

Secondary

Goat polyclonal to rabbit at 1/10000 dilution

Predicted band size: 21 kDa

Observed band size: 21 kDa