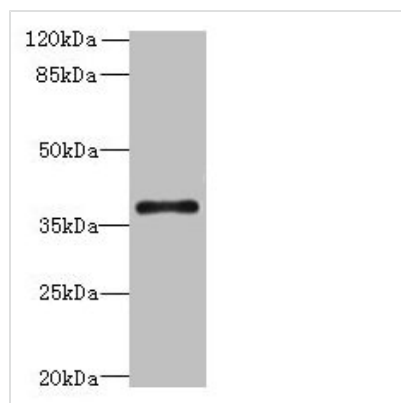




# SUCNR1 Antibody

|                            |   |
|----------------------------|---|
| <b>Product Code</b>        | CSB-PA022921LA01HU  |
| <b>Storage</b>             | Upon receipt, store at -20°C or -80°C. Avoid repeated freeze.                                 |
| <b>Uniprot No.</b>         | Q9BXA5  |
| <b>Immunogen</b>           | Recombinant Human Succinate receptor 1 protein (303-334AA)                                    |
| <b>Raised In</b>           | Rabbit  |
| <b>Species Reactivity</b>  | Human   |
| <b>Tested Applications</b> | ELISA, WB, IHC, IF; Recommended dilution: WB:1:1000-1:5000, IHC:1:20-1:200, IF:1:50-1:200     |
| <b>Form</b>                | Liquid  |
| <b>Conjugate</b>           | Non-conjugated  |
| <b>Storage Buffer</b>      | Preservative: 0.03% Proclin 300<br>Constituents: 50% Glycerol, 0.01M PBS, PH 7.4              |
| <b>Purification Method</b> | >95%, Protein G purified  |
| <b>Isotype</b>             | IgG   |
| <b>Clonality</b>           | Polyclonal  |
| <b>Alias</b>               | Succinate receptor 1 (G-protein coupled receptor 91) (P2Y purinoceptor 1-like), SUCNR1, GPR91 |
| <b>Immunogen Species</b>   | Homo sapiens (Human)  |
| <b>Research Area</b>       | Signal Transduction   |
| <b>Target Names</b>        | SUCNR1  |

## Image



Western blot

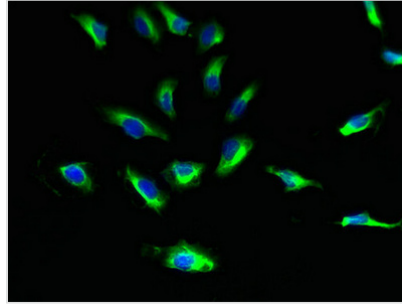
All lanes: SUCNR1 antibody at 6µg/ml + HeLa whole cell lysate

Secondary

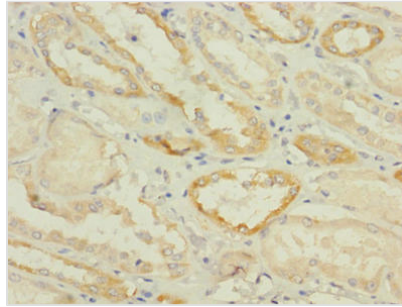
Goat polyclonal to rabbit IgG at 1/10000 dilution

Predicted band size: 39 kDa

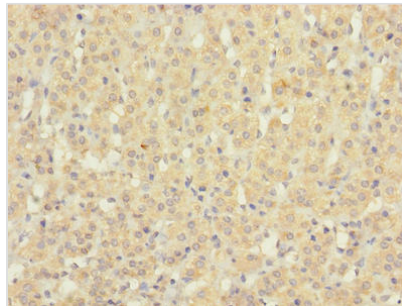
Observed band size: 39 kDa



Immunofluorescent analysis of HeLa cells using CSB-PA022921LA01HU at dilution of 1:100 and Alexa Fluor 488-conjugated AffiniPure Goat Anti-Rabbit IgG(H+L)



Immunohistochemistry of paraffin-embedded human kidney tissue using CSB-PA022921LA01HU at dilution of 1:100



Immunohistochemistry of paraffin-embedded human adrenal gland tissue using CSB-PA022921LA01HU at dilution of 1:100

**Usage**

For Research Use Only. Not for use in diagnostic or therapeutic procedures.