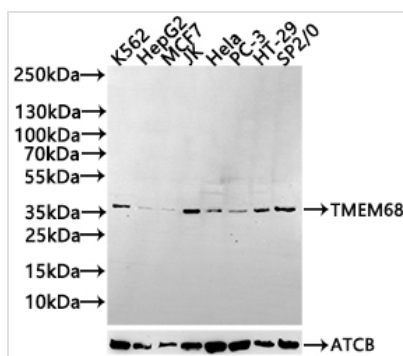




TMEM68 Antibody

Product Code	CSB-PA023872LA01HU
Storage	Upon receipt, store at -20°C or -80°C. Avoid repeated freeze.
Uniprot No.	Q96MH6
Immunogen	Recombinant Human Transmembrane protein 68 protein (74-114AA)
Raised In	Rabbit
Species Reactivity	Human, Mouse
Tested Applications	ELISA, WB; Recommended dilution: WB:1:1000-1:3000
Form	Liquid
Conjugate	Non-conjugated
Storage Buffer	Preservative: 0.03% Proclin 300 Constituents: 50% Glycerol, 0.01M PBS, PH 7.4
Purification Method	>95%, Protein G purified
Isotype	IgG
Clonality	Polyclonal
Product Type	Polyclonal Antibody
Immunogen Species	Homo sapiens (Human)
Research Area	Signal Transduction
Target Names	TMEM68

Image



Western Blot

Positive WB detected in: K562 whole cell lysate(30µg), HepG2 whole cell lysate(30µg), MCF7 whole cell lysate(30µg), JK whole cell lysate(30µg), Hela whole cell lysate(30µg), PC-3 whole cell lysate(30µg), HT-29 whole cell lysate(30µg), SP2/O whole cell lysate(30µg)
 All lanes: TMEM68 antibody at 1:1000
 Secondary
 Goat polyclonal to rabbit IgG at 1/20000 dilution
 Predicted band size: 38,30,16 kDa
 Observed band size: 38 kDa
 Exposure time: 60s

Usage

For Research Use Only. Not for use in diagnostic or therapeutic procedures.