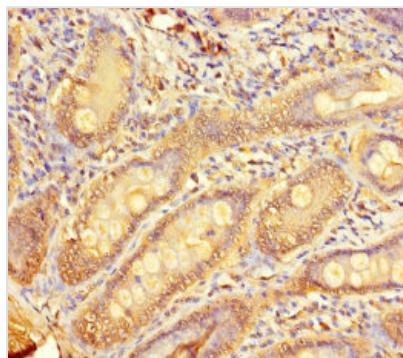




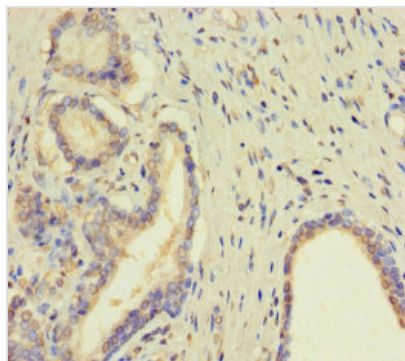
TMPRSS11D Antibody

| | |
|----------------------------|---|
| Product Code | CSB-PA023918LA01HU |
| Storage | Upon receipt, store at -20°C or -80°C. Avoid repeated freeze. |
| Uniprot No. | O60235 |
| Immunogen | Recombinant Human Transmembrane protease serine 11D protein (201-418AA) |
| Raised In | Rabbit |
| Species Reactivity | Human |
| Tested Applications | ELISA, IHC; Recommended dilution: IHC:1:20-1:200 |
| Form | Liquid |
| Conjugate | Non-conjugated |
| Storage Buffer | Preservative: 0.03% Proclin 300 Constituents: 50% Glycerol, 0.01M PBS, PH 7.4 |
| Purification Method | >95%, Protein G purified |
| Isotype | IgG |
| Clonality | Polyclonal |
| Alias | Transmembrane protease serine 11D (EC 3.4.21.-) (Airway trypsin-like protease) [Cleaved into: Transmembrane protease serine 11D non-catalytic chain; Transmembrane protease serine 11D catalytic chain], TMPRSS11D, HAT |
| Immunogen Species | Homo sapiens (Human) |
| Research Area | Cell Biology |
| Target Names | TMPRSS11D |

Image



Immunohistochemistry of paraffin-embedded human small intestine tissue using CSB-PA023918LA01HU at dilution of 1:100



Immunohistochemistry of paraffin-embedded human prostate cancer using CSB-PA023918LA01HU at dilution of 1:100

Usage

For Research Use Only. Not for use in diagnostic or therapeutic procedures.