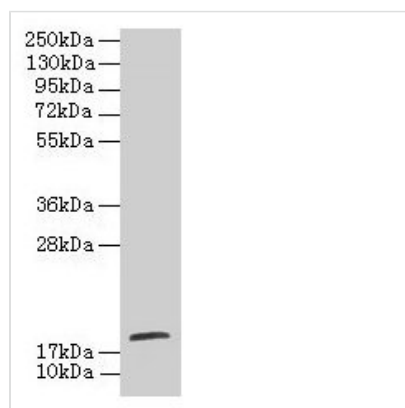




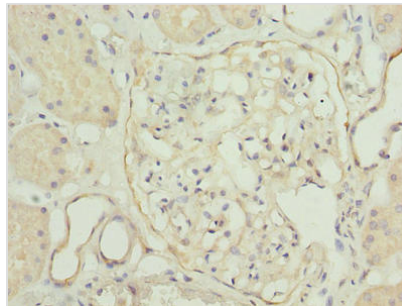
# TPPP2 Antibody

|                            |  |
|----------------------------|--|
| <b>Product Code</b>        | CSB-PA024116LA01HU   |
| <b>Storage</b>             | Upon receipt, store at -20°C or -80°C. Avoid repeated freeze.  |
| <b>Uniprot No.</b>         | P59282   |
| <b>Immunogen</b>           | Recombinant Human Tubulin polymerization-promoting protein family member 2 protein (1-170AA)           |
| <b>Raised In</b>           | Rabbit   |
| <b>Species Reactivity</b>  | Human  |
| <b>Tested Applications</b> | ELISA, WB, IHC, IF; Recommended dilution: WB:1:500-1:2000, IHC:1:20-1:200, IF:1:50-1:200               |
| <b>Form</b>                | Liquid   |
| <b>Conjugate</b>           | Non-conjugated   |
| <b>Storage Buffer</b>      | Preservative: 0.03% Proclin 300<br>Constituents: 50% Glycerol, 0.01M PBS, PH 7.4                       |
| <b>Purification Method</b> | >95%, Protein G purified   |
| <b>Isotype</b>             | IgG  |
| <b>Clonality</b>           | Polyclonal   |
| <b>Alias</b>               | Tubulin polymerization-promoting protein family member 2 (Protein p25-beta) (TPPP/p18), TPPP2, C14orf8 |
| <b>Immunogen Species</b>   | Homo sapiens (Human)   |
| <b>Research Area</b>       | Cell Biology   |
| <b>Target Names</b>        | TPPP2  |

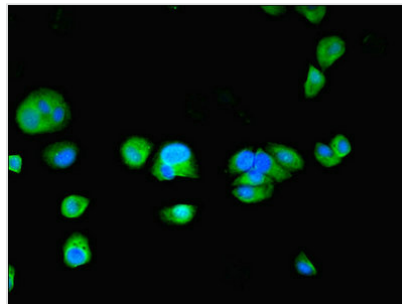
## Image



Western blot  
All lanes: TPPP2 antibody at 8µg/ml + HepG2 whole cell lysate  
Secondary  
Goat polyclonal to rabbit IgG at 1/10000 dilution  
Predicted band size: 19 kDa  
Observed band size: 19 kDa



Immunohistochemistry of paraffin-embedded human kidney tissue using CSB-PA024116LA01HU at dilution of 1:100



Immunofluorescent analysis of MCF-7 cells using CSB-PA024116LA01HU at dilution of 1:100 and Alexa Fluor 488-conjugated AffiniPure Goat Anti-Rabbit IgG(H+L)