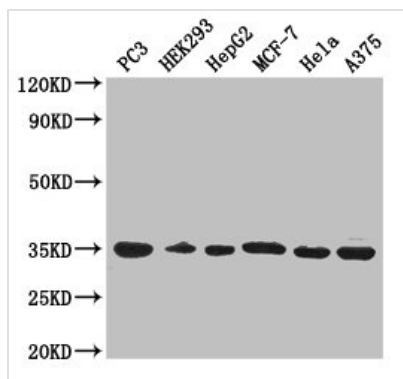




# COPE Antibody

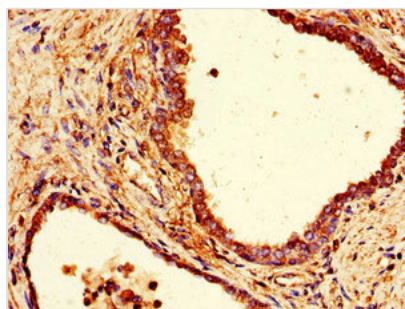
<b>Product Code</b>	CSB-PA03669A0Rb
<b>Storage</b>	Upon receipt, store at -20°C or -80°C. Avoid repeated freeze.
<b>Uniprot No.</b>	O14579
<b>Immunogen</b>	Recombinant Human Coatomer subunit epsilon protein (2-308AA)
<b>Raised In</b>	Rabbit
<b>Species Reactivity</b>	Human
<b>Tested Applications</b>	ELISA, WB, IHC; Recommended dilution: WB:1:500-1:5000, IHC:1:20-1:200
<b>Form</b>	Liquid
<b>Conjugate</b>	Non-conjugated
<b>Storage Buffer</b>	Preservative: 0.03% Proclin 300 Constituents: 50% Glycerol, 0.01M PBS, PH 7.4
<b>Purification Method</b>	>95%, Protein G purified
<b>Isotype</b>	IgG
<b>Clonality</b>	Polyclonal
<b>Alias</b>	Coatomer subunit epsilon (Epsilon-coat protein) (Epsilon-COP), COPE
<b>Immunogen Species</b>	Homo sapiens (Human)
<b>Research Area</b>	Signal Transduction
<b>Target Names</b>	COPE

## Image



### Western Blot

Positive WB detected in: PC-3 whole cell lysate, HEK293 whole cell lysate, HepG2 whole cell lysate, MCF-7 whole cell lysate, Hela whole cell lysate, A375 whole cell lysate  
All lanes: COPE antibody at 3µg/ml  
Secondary  
Goat polyclonal to rabbit IgG at 1/50000 dilution  
Predicted band size: 35, 29 kDa  
Observed band size: 35 kDa



Immunohistochemistry of paraffin-embedded human prostate cancer using CSB-PA03669A0Rb at dilution of 1:100



**Usage**

For Research Use Only. Not for use in diagnostic or therapeutic procedures.