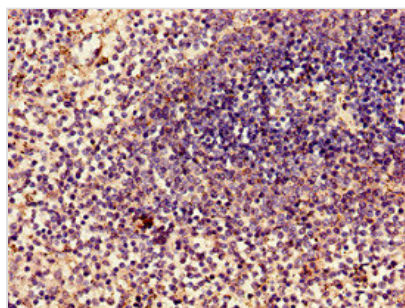




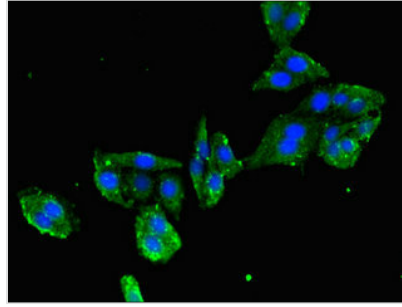
MYL2 Antibody

Product Code	CSB-PA10059A0Rb
Storage	Upon receipt, store at -20°C or -80°C. Avoid repeated freeze.
Uniprot No.	P10916
Immunogen	Recombinant Human Myosin regulatory light chain 2, ventricular/cardiac muscle isoform protein (8-164AA)
Raised In	Rabbit
Species Reactivity	Human
Tested Applications	ELISA, IHC, IF; Recommended dilution: IHC:1:20-1:200, IF:1:50-1:200
Form	Liquid
Conjugate	Non-conjugated
Storage Buffer	Preservative: 0.03% Proclin 300 Constituents: 50% Glycerol, 0.01M PBS, PH 7.4
Purification Method	>95%, Protein G purified
Isotype	IgG
Clonality	Polyclonal
Alias	Myosin regulatory light chain 2, ventricular/cardiac muscle isoform (MLC-2) (MLC-2v) (Cardiac myosin light chain 2) (Myosin light chain 2, slow skeletal/ventricular muscle isoform) (MLC-2s/v) (Ventricular myosin light chain 2), MYL2, MLC2
Immunogen Species	Homo sapiens (Human)
Research Area	Signal Transduction
Target Names	MYL2

Image



Immunohistochemistry of paraffin-embedded human spleen tissue using CSB-PA10059A0Rb at dilution of 1:100



Immunofluorescent analysis of HepG2 cells using CSB-PA10059A0Rb at dilution of 1:100 and Alexa Fluor 488-conjugated AffiniPure Goat Anti-Rabbit IgG(H+L)

Usage

For Research Use Only. Not for use in diagnostic or therapeutic procedures.